

# Materials and colours

## Upholstery

FAUX LEATHER CX	FAUX LEATHER CI	LEATHER S + FAUX LEATHER N	LEATHER TU	LEATHER TX	FABRIC SY   SINERGY	FABRIC MY   MEMORY 2
FABRIC ME	FABRIC CO   CODA 2	FABRIC BA   BASEL	FABRIC AL   ALBA	FABRIC CN   CANVAS 2	FABRIC CL   CLARA 2	

Fine faux-leather fabric with a compact appearance, pleasant to the touch with a peach skin feel, bi-elastic, breathable. The CX faux leather is easy to clean, anti-bacterial and anti-mould; it allows you to avoid unpleasant odors and allergies. Composition: 79% PVC - 9% Polyurethane - 8% Polyester - 4%, Cotton - Weight: 630 g / sq m (± 10%) - Thickness: 1.1 mm - UV light resistance Xenotest Alpha: ≥ 4 gray scale - Abrasion method "Cesconi" UNI 4818 74-15° (Resistant). Faux leather that is completely free of phthalates. ECO material compliant with the REACH Regulation (Regulation EC 1907/2006).

### MAINTENANCE

Dust it gently; in case of minor stains wipe the surface with a damp cloth or with a solution of mild detergent, rinse with water, wring out, let it dry naturally. Do not use cleaning agents that contain alcohol and/or ammonia or harsh detergents that can damage the appearance and tightness of the eco-leather over time.

**Attention:** the fine ecological leather CX should not be brought into contact with textiles and/or clothing colored with unfixed dyes, or wetted or like jeans, to avoid permanent stains. We cannot guarantee the possibility to remove unknown dyes from light and medium colored product.

Please refer to the Price list in force and to the General sale conditions for the colours and the combinations available for every single product.

Colours shown are used for reference only and may look different in reality. Please contact SitLand to receive more informations.



## Materials and colours

### Upholstery

FAUX LEATHER CX

**FAUX LEATHER CI**

LEATHER S + FAUX LEATHER N

LEATHER TU

LEATHER TX

FABRIC SY | SINERGY

FABRIC MY | MEMORY 2

FABRIC ME

FABRIC CO | CODA 2

FABRIC BA | BASEL

FABRIC AL | ALBA

FABRIC CN | CANVAS 2

FABRIC CL | CLARA 2

Fine faux-leather fabric with a compact appearance, pleasant to the touch with a peach skin feel, bi-elastic, breathable. The CI faux leather is easy to clean, anti-bacterial and anti-mould; it allows you to avoid unpleasant odors and allergies. Composition: 79% PVC - 9% Polyurethane - 8% Polyester - 4%, Cotton - Weight: 630 g / sq m ( $\pm 10\%$ ) - Thickness: 1.1 mm - UV light resistance Xenotest Alpha:  $\geq 4$  grayscale - Abrasion method "Cesconi" UNI 4818 74-15° (Resistant) - flammability UNI 9175:2008 Class 1 IM. Faux leather that is completely free of phthalates. ECO material compliant with the REACH Regulation (Regulation EC 1907/2006).

#### MAINTENANCE

Dust it gently; in case of minor stains wipe the surface with a damp cloth or with a solution of mild detergent, rinse with water, wring out, let it dry naturally. Do not use cleaning agents that contain alcohol and/or ammonia or harsh detergents that can damage the appearance and tightness of the eco-leather over time.

**Attention:** the fine ecological leather CI should not be brought into contact with textiles and/or clothing colored with unfixed dyes, or wetted or like jeans, to avoid permanent stains. We cannot guarantee the possibility to remove unknown dyes from light and medium colored product.

Please refer to the Price list in force and to the General sale conditions for the colours and the combinations available for every single product.

Colours shown are used for reference only and may look different in reality. Please contact SitLand to receive more informations.



## Materials and colours

### Upholstery

FAUX LEATHER CX	FAUX LEATHER CI	LEATHER S + FAUX LEATHER N	LEATHER TU	LEATHER TX	FABRIC SY   SINERGY	FABRIC MY   MEMORY 2
FABRIC ME	FABRIC CO   CODA 2	FABRIC BA   BASEL	FABRIC AL   ALBA	FABRIC CN   CANVAS 2	FABRIC CL   CLARA 2	

Resistant ecological leather, matching with real leather cat. S, good grain, complete colour selection, easy maintenance.

#### Leather S

Buffed and pigmented real leather from European hides. Solid and durable colors. Flammability: UNI EN 1021 - 1&2 (no ignition) Color fastness to light: UNI EN ISO 105-B02 ≥ 6 Color fastness to rubbing: UNI EN ISO 11640 ≥ 4 (dry/wet). To maintain the beauty of the leather; avoid placing leather near direct sun or any heat sources, dust regularly with a soft and dry cloth. Spots can be washed off using a lightly damp cloth with mild soap; dry after the treatment, do not rub. Never use strong detergents or sprays that can damage the appearance and tightness of the leather over time.

#### Ecological leather N

Ecological leather 80% PVC, 20% Polyester Weight: 550 g/m². The colours of the N faux-leather fabric match the corresponding colors of the genuine S leather. The fabric is wear-resistant and easy to clean with mild soap and water. Do not use cleaning agents that contain alcohol and/or ammonia or harsh detergents that can damage the appearance and the tightness of the faux-leather over time.

Please refer to the Price list in force and to the General sale conditions for the colours and the combinations available for every single product.

Colours shown are used for reference only and may look different in reality. Please contact SitLand to receive more informations.



Materials and colours

Upholstery

FAUX LEATHER CX	FAUX LEATHER CI	LEATHER S + FAUX LEATHER N	LEATHER TU	LEATHER TX	FABRIC SY   SINERGY	FABRIC MY   MEMORY 2
FABRIC ME	FABRIC CO   CODA 2	FABRIC BA   BASEL	FABRIC AL   ALBA	FABRIC CN   CANVAS 2	FABRIC CL   CLARA 2	

Vintage leather. Composition: natural leather from bovine hides of European origin, lightly buffed with natural grain. Tear strength UNI EN ISO 3377-1: single edge tear ≥ 20. Colour fastness to rubbing UNI EN ISO 11640:1998: Dry 50 cycles ≥ 3. Colour fastness to rubbing UNI EN ISO 11640:1998: Wet 20 cycles ≥ 3. Colour fastness to rubbing UNI EN ISO 11640:1998, ISO 11641 ph8 (grey scale: Perspiration 20 cycles ≥ 2. Flexing endurance UNI EN ISO 5402: Dry 50.000 cycles - No damage. Colour fastness to artificial light UNI EN ISO 105 B02 (MET.5), blue scale: exposition energy 16.000 kJ/sqm ≥ 2/3. Chrome tanning, aniline dyed. Water based finish, with waxes, anilines and resins finely dispersed for a “vintage” appearance. Stiff handle, slippery feel and semi-gloss appearance. Being aniline article, some little color variation between different hides and batches are acceptable. Avoid direct sunlight. Avoid exposure to heat sources.



Please refer to the Price list in force and to the General sale conditions for the colours and the combinations available for every single product.

Colours shown are used for reference only and may look different in reality. Please contact SitLand to receive more informations.



Materials and colours

Upholstery

FAUX LEATHER CX	FAUX LEATHER CI	LEATHER S + FAUX LEATHER N	LEATHER TU	LEATHER TX	FABRIC SY   SINERGY	FABRIC MY   MEMORY 2
FABRIC ME	FABRIC CO   CODA 2	FABRIC BA   BASEL	FABRIC AL   ALBA	FABRIC CN   CANVAS 2	FABRIC CL   CLARA 2	

Composition: natural leather from bovine hides of European origin, lightly buffed with natural grain. Tear strength UNI EN ISO 3377-1: single edge tear  $\geq$  20. Colour fastness to rubbing UNI EN ISO 11640:1998: Dry 50 cycles  $\geq$  3. Colour fastness to rubbing UNI EN ISO 11640:1998: Wet 20 cycles  $\geq$  3. Colour fastness to rubbing UNI EN ISO 11640:1998, ISO 11641 ph8 (grey scale: Perspiration 20 cycles  $\geq$  2. Flexing endurance UNI EN ISO 5402: Dry 50.000 cycles - No damage. Colour fastness to artificial light UNI EN ISO 105 B02(MET.5) (blue scale): exposition energy 16.000 kj/sqm  $\geq$  2/3. Chrome tanning, aniline dyed. Water based finish, with waxes, anilines and resins finely dispersed for a "vintage" appearance. Stiff handle, slippery feel and semi-gloss appearance. Being aniline article, some little color variation between different hides and batches are acceptable. Avoid direct sunlight. Avoid exposure to heat sources.



Please refer to the Price list in force and to the General sale conditions for the colours and the combinations available for every single product.

Colours shown are used for reference only and may look different in reality. Please contact SitLand to receive more informations.

Materials and colours

Upholstery

- FAUX LEATHER CX
- FAUX LEATHER CI
- LEATHER S + FAUX LEATHER N
- LEATHER TU
- LEATHER TX
- FABRIC SY | SINERGY
- FABRIC MY | MEMORY 2
- FABRIC ME
- FABRIC CO | CODA 2
- FABRIC BA | BASEL
- FABRIC AL | ALBA
- FABRIC CN | CANVAS 2
- FABRIC CL | CLARA 2

**SY - Sinergy by Camira**  
Composition: fine mixed fabric, 95% Virgin Wool, 5% Polyamide. Weight: 560 g/lm.  
Flammability: EN 1021 - 1 (cigarette), EN 1021 - 2 (match), BS 7176 Low Hazard, UNI 9175 Classe 1 IM, NF D 60-013, ÖNORM B 3825 & A 3800-1. CAL TB 117 Section E, NFPA 260 + UFAC Class 1. Abrasion: BS EN ISO 12947-2: 100.000 Martindale cycles. Colour fastness to light: EN ISO 105-B02: 5. Colour fastness to rubbing (wet/dry) EN ISO 105x12:4. Environment: 100% free of heavy metals, complies with EU ecolabel "The Flower".

Please refer to the Price list in force and to the General sale conditions for the colours and the combinations available for every single product.

Colours shown are used for reference only and may look different in reality. Please contact SitLand to receive more informations.



Materials and colours

Upholstery

- FAUX LEATHER CX
- FAUX LEATHER CI
- LEATHER S + FAUX LEATHER N
- LEATHER TU
- LEATHER TX
- FABRIC SY | SINERGY
- FABRIC MY | MEMORY 2
- FABRIC ME
- FABRIC CO | CODA 2
- FABRIC BA | BASEL
- FABRIC AL | ALBA
- FABRIC CN | CANVAS 2
- FABRIC CL | CLARA 2

MY - Memory 2 by Kvadrat  
Designer: Patricia Urquiola.

Composition: 100% Trevira CS. Weight: 700 g/lm. Flammability: AS/NZS 3837, BS 5852 part 1, DIN 4102 B1, EN 1021-1/2, IMO FTP Code 2010 Part 8, NF D 60 013, NFPA 260, ÖNORM B1/ Q1, SN 198 898 5.2, UNI 9175 Classe 1IM, UNI 9177 Classe 1, US California Technical Bulletin 117-2013. Abrasion: EN ISO 12947: 35.000 Martindale cycles. Pilling: EN ISO 12945: 4. Colour fastness to light: ISO 105-B02: 8. Colour: slight difference may occur. Environment: reduced environmental impact. 100% free of heavy metals, complies with ETAD norm. Complies with REACH regulation.



Please refer to the Price list in force and to the General sale conditions for the colours and the combinations available for every single product.

Colours shown are used for reference only and may look different in reality. Please contact SitLand to receive more informations.

## Materials and colours

### Upholstery

FAUX LEATHER CX	FAUX LEATHER CI	LEATHER S + FAUX LEATHER N	LEATHER TU	LEATHER TX	FABRIC SY   SINERGY	FABRIC MY   MEMORY 2
FABRIC ME	FABRIC CO   CODA 2	FABRIC BA   BASEL	FABRIC AL   ALBA	FABRIC CN   CANVAS 2	FABRIC CL   CLARA 2	

Manufacturer: Gabriel

Designer: Mette Krebs Petersen

Fabric 100% Polyester. Weight 510 gr/lm. Abrasion resistance: 75.000 Martindale EN ISO 12947-2. Flammability: EN 10211%2 D BS 5852 0&1 D California Tech. Bull. 117-E D UNI 9175 Class 1 IM. Pilling: EN ISO 12945-2:4. Colour fastness to light: EN ISO 105-B02:5/7. Colour fastness to rubbing: EN ISO 105x12:4/5 (wet/dry). Vacuum the surface of the fabric regularly, taking care do not rub the surface of the fabric. Small spots and / or stains can be cleaned with a damp cloth and a small amount of mild soap. Allow to dry naturally, do not rub.Do not use cleaning agents that contain alcohol and / or ammonia or harsh detergents that can damage the appearance and the tightness of the fabric over time.

Please refer to the Price list in force and to the General sale conditions for the colours and the combinations available for every single product.

Colours shown are used for reference only and may look different in reality. Please contact SitLand to receive more informations.





## Materials and colours

### Upholstery

FAUX LEATHER CX

FAUX LEATHER CI

LEATHER S + FAUX LEATHER N

LEATHER TU

LEATHER TX

FABRIC SY | SINERGY

FABRIC MY | MEMORY 2

FABRIC ME

**FABRIC CO | CODA 2**

FABRIC BA | BASEL

FABRIC AL | ALBA

FABRIC CN | CANVAS 2

FABRIC CL | CLARA 2

CO - Coda 2 by Kvadrat  
Designer: Norway Says & Per Bjørnsen

Composition: fine fabric with three-dimensional expression, 90% New wool, 10% Nylon. Weight: 860 g/lm. Flammability: AS/NZS 1530.3, BS 5852 Crib 5 with treatment, BS 5852 part 1, DIN 4102 B2, EN 1021-1/2, IMO FTP Code 2010 Part 8, NF D 60 013, NFPA 260, ÖNORM B1/ Q1, SN 198 898 5.3 with treatment, UNI 9175 Classe 1IM, US California Technical Bulletin 117-2013. Abrasion: EN ISO 12947:100.000 Martindale cycles. Pilling: EN ISO 12945: 4. Colour fastness to light: ISO 105-B02: 6-7. Colour: slight difference may occur. Environment: natural fibres / Sustainable resource. 100% free of heavy metals, complies with ETAD norm. Complies with REACH regulation.



Please refer to the Price list in force and to the General sale conditions for the colours and the combinations available for every single product.

Colours shown are used for reference only and may look different in reality. Please contact SitLand to receive more informations.

Materials and colours

Upholstery

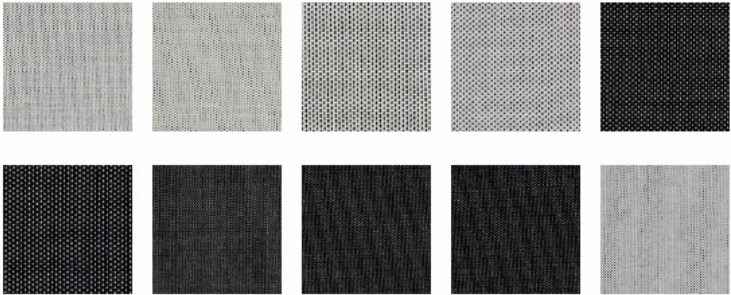
- FAUX LEATHER CX
- FAUX LEATHER CI
- LEATHER S + FAUX LEATHER N
- LEATHER TU
- LEATHER TX
- FABRIC SY | SINERGY
- FABRIC MY | MEMORY 2
- FABRIC ME
- FABRIC CO | CODA 2
- FABRIC BA | BASEL
- FABRIC AL | ALBA
- FABRIC CN | CANVAS 2
- FABRIC CL | CLARA 2

BA - Basel by Kvadrat  
Designer: Herzog & de Meuron

Composition: sophisticated fabric, 90% New wool worsted, 10% Nylon. Weight: 510 g/lm. Flammability AS/NZS 3837, class 2, BS 5852 Crib 5 with treatment, BS 5852 part 1, DIN 4102 B2, EN 1021-1/2, IMO FTP Code 2010 Part 8, NF D 60 013, NFPA 260, ÖNORM B1/ Q1, UNI 9175 Classe 1IM, US California Technical Bulletin 117-2013. Abrasion: EN ISO 12947 50.000 Martindale cycles. Pilling: EN ISO 12945:4. Colour fastness to light: ISO 105-B02:6-7. Colour: slight difference may occur. Environment: natural fibres / sustainable resource, 100% free of heavy metals, complies with ETAD norm.

Please refer to the Price list in force and to the General sale conditions for the colours and the combinations available for every single product.

Colours shown are used for reference only and may look different in reality. Please contact SitLand to receive more informations.



## Materials and colours

### Upholstery

FAUX LEATHER CX	FAUX LEATHER CI	LEATHER S + FAUX LEATHER N	LEATHER TU	LEATHER TX	FABRIC SY   SINERGY	FABRIC MY   MEMORY 2
FABRIC ME	FABRIC CO   CODA 2	FABRIC BA   BASEL	<b>FABRIC AL   ALBA</b>	FABRIC CN   CANVAS 2	FABRIC CL   CLARA 2	

**AL - Alba by FiDiVi**

Composition: 100% Polyester. Weight: 450 g/lm. Flammability: EN 1021-1 cigarette, EN 1021-2 match, Crib 5 (BS 5852 part II), BS 7176 Medium Hazard, UNI 9175 Class 1IM, US California Technical Bulletin 117-2013. Abrasion resistance: ISO 12947-2, 100.000 Martindale cycles. Pilling: EN ISO 12945-2:5. Colour fastness to light: ISO 105-B02, 6 (blue scale). Color fastness to rubbing: ISO 105-X12, 4/5 (grey scale).

Please refer to the Price list in force and to the General sale conditions for the colours and the combinations available for every single product.

Colours shown are used for reference only and may look different in reality. Please contact SitLand to receive more informations.



Materials and colours

Upholstery

- FAUX LEATHER CX
- FAUX LEATHER CI
- LEATHER S + FAUX LEATHER N
- LEATHER TU
- LEATHER TX
- FABRIC SY | SINERGY
- FABRIC MY | MEMORY 2
- FABRIC ME
- FABRIC CO | CODA 2
- FABRIC BA | BASEL
- FABRIC AL | ALBA
- FABRIC CN | CANVAS 2
- FABRIC CL | CLARA 2

CN - Canvas 2 by Kvadrat  
Designer: Giulio Ridolfo.

Composition: 90% New wool worsted, 10% Nylon. Weight: 480 g/lm. Flammability: AS/NZS 1530.3, BS 5852 Crib 5 with treatment, BS 5852 part 1, DIN 4102 B2, EN 1021-1/2, IMO FTP Code 2010 Part 8, NF D 60 013, NFPA 260, ÖNORM B1/ Q1, SN 198 898 5.3 with treatment, UNI 9175 Classe 1IM, US California Technical Bulletin 117- 2013. Abrasion: EN ISO 12947: 100.000 Martindale cycles. Pilling: EN ISO 12945:4-5. Colour fastness to light: ISO 105-B02:6. Colour: slight difference may occur. Environment: complies with EU ecolabel “The Flower”, 100% free of heavy metals, complies with ETAD norm.

Please refer to the Price list in force and to the General sale conditions for the colours and the combinations available for every single product.

Colours shown are used for reference only and may look different in reality. Please contact SitLand to receive more informations.





## Materials and colours

### Upholstery

FAUX LEATHER CX

FAUX LEATHER CI

LEATHER S + FAUX LEATHER N

LEATHER TU

LEATHER TX

FABRIC SY | SINERGY

FABRIC MY | MEMORY 2

FABRIC ME

FABRIC CO | CODA 2

FABRIC BA | BASEL

FABRIC AL | ALBA

FABRIC CN | CANVAS 2

**FABRIC CL | CLARA 2**

#### CL Clara 2 by Kvadrat

Designer: Anne Birgitte Hansen.

Composition: fresh yet refined fabric, 92% New wool worsted, 8% Nylon. Weight: 400 g/lm. Flammability: AS/NZS 3837, BS 5852 Crib 5 with treatment, BS 5852 part 1, DIN 4102 B2, EN 1021-1/2, IMO FTP Code 2010 Part 8, NF D 60 013, NFPA 260, ÖNORM B1/ Q1, UNI 9175 Classe 1IM, US California Technical Bulletin 117-2013. Abrasion: EN ISO 12947: 80.000 Martindale cycles. Pilling: EN ISO 12945: 4. Colour fastness to light: ISO 105-B02: 6. Colour: slight difference may occur. Environment: complies with EU ecolabel "The Flower". 100% free of heavy metals.

Please refer to the Price list in force and to the General sale conditions for the colours and the combinations available for every single product.

Colours shown are used for reference only and may look different in reality. Please contact SitLand to receive more informations.

