

Materials and colours

Seat Upholstery

Back mesh upholstery

FABRIC AB

FABRIC AL | ALBA

FABRIC BA | BASEL

FABRIC BN

FABRIC CL | CLARA 2

FABRIC IP

FABRIC ME

FABRIC SY | SINERGY

MESH RY | RHYTHM

MESH RR

Crepe fabric made of 100% Xtreme FR® recycled polyester that is free of heavy metals. Weight: 310 g/m² Abrasion resistance: 100.000 cycles Martindale Flammability: EN 1021 1&2, BS 5852 CRIB 5, UNI 8456 & UNI 9174 CLASSE 1, NF-P-92-507 M1, NF D 60-013, DIN 4102 B1, Color fastness to light: UNI EN ISO 105-B02:6 Color fastness to rubbing: UNI EN ISO 105x12:4 (dry/wet).

Vacuum the surface of the fabric regularly, taking care do not rub the surface of the fabric. Small spots and/or stains can be cleaned with a damp cloth and a small amount of mild soap. Allow to dry naturally, do not rub. Do not use cleaning agents that contain alcohol and / or ammonia or harsh detergents that can damage the appearance and the tightness of the fabric over time.

The fabric Xtreme is guaranteed for 10 years in normal home or office use.

Please refer to the Price list in force and to the General sale conditions for the colours and the combinations available for every single product.

Colours shown are used for reference only and may look different in reality. Please contact SitLand to receive more informations.



Materials and colours

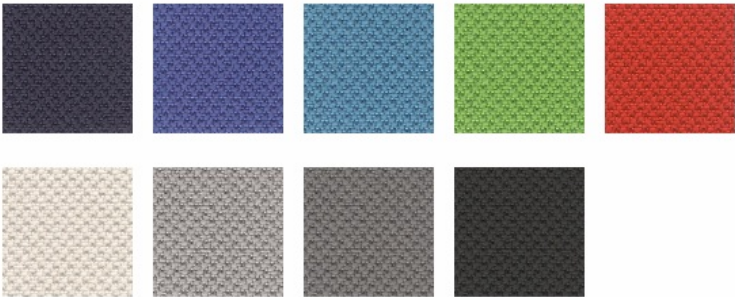
Seat Upholstery Back mesh upholstery

- FABRIC AB
- FABRIC AL | ALBA**
- FABRIC BA | BASEL
- FABRIC BN
- FABRIC CL | CLARA 2
- FABRIC IP
- FABRIC ME
- FABRIC SY | SINERGY
- MESH RY | RHYTHM
- MESH RR

AL - Alba by FiDiVi
Composition: 100% Polyester. Weight: 450 g/lm. Flammability: EN 1021-1 cigarette, EN 1021-2 match, Crib 5 (BS 5852 part II), BS 7176 Medium Hazard, UNI 9175 Class 1IM, US California Technical Bulletin 117-2013. Abrasion resistance: ISO 12947-2, 100.000 Martindale cycles. Pilling: EN ISO 12945-2:5. Colour fastness to light: ISO 105-B02, 6 (blue scale). Color fastness to rubbing: ISO 105-X12, 4/5 (grey scale).

Please refer to the Price list in force and to the General sale conditions for the colours and the combinations available for every single product.

Colours shown are used for reference only and may look different in reality. Please contact SitLand to receive more informations.



Materials and colours

Seat Upholstery Back mesh upholstery

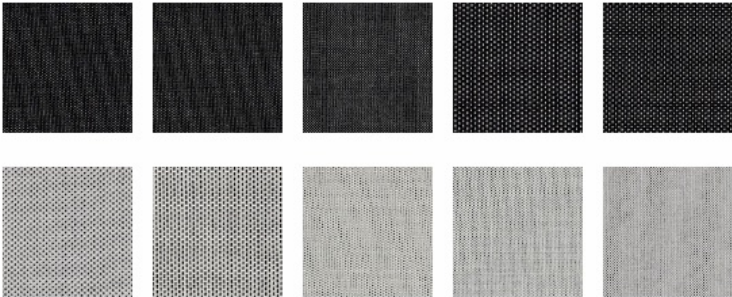
- FABRIC AB
- FABRIC AL | ALBA
- FABRIC BA | BASEL
- FABRIC BN
- FABRIC CL | CLARA 2
- FABRIC IP
- FABRIC ME
- FABRIC SY | SINERGY
- MESH RY | RHYTHM
- MESH RR

BA - Basel by Kvadrat
Designer: Herzog & de Meuron

Composition: sophisticated fabric, 90% New wool worsted, 10% Nylon. Weight: 510 g/lm. Flammability AS/NZS 3837, class 2, BS 5852 Crib 5 with treatment, BS 5852 part 1, DIN 4102 B2, EN 1021-1/2, IMO FTP Code 2010 Part 8, NF D 60 013, NFPA 260, ÖNORM B1/ Q1, UNI 9175 Classe 1IM, US California Technical Bulletin 117-2013. Abrasion: EN ISO 12947 50.000 Martindale cycles. Pilling: EN ISO 12945:4. Colour fastness to light: ISO 105-B02:6-7. Colour: slight difference may occur. Environment: natural fibres / sustainable resource, 100% free of heavy metals, complies with ETAD norm.

Please refer to the Price list in force and to the General sale conditions for the colours and the combinations available for every single product.

Colours shown are used for reference only and may look different in reality. Please contact SitLand to receive more informations.



Materials and colours

Seat Upholstery

Back mesh upholstery

- FABRIC AB
- FABRIC AL | ALBA
- FABRIC BA | BASEL
- FABRIC BN
- FABRIC CL | CLARA 2
- FABRIC IP
- FABRIC ME
- FABRIC SY | SINERGY
- MESH RY | RHYTHM
- MESH RR

Crepe fabric made of 100% polyester Oeko-Tex Standard 100 certified. Weight: 250 g/m² Abrasion resistance: 100.000 cycles Martindale EN ISO 12947-2 Flammability: EN 10211&2 - BS 5852 CRIB 5 - CLASS 1 IM, NF D 60013 Class AM 18. Color fastness to light: UNI EN ISO 105-B02:6 Color fastness to rubbing: UNI EN ISO 105x12:4/5.

Vacuum the surface of the fabric regularly, taking care do not rub the surface of the fabric. Small spots and/or stains can be cleaned with a damp cloth and a small amount of mild soap. Allow to dry naturally, do not rub.

Please refer to the Price list in force and to the General sale conditions for the colours and the combinations available for every single product.

Colours shown are used for reference only and may look different in reality. Please contact SitLand to receive more informations.



Materials and colours

Seat Upholstery

Back mesh upholstery

FABRIC AB

FABRIC AL | ALBA

FABRIC BA | BASEL

FABRIC BN

FABRIC CL | CLARA 2

FABRIC IP

FABRIC ME

FABRIC SY | SINERGY

MESH RY | RHYTHM

MESH RR

CL Clara 2 by Kvadrat

Designer: Anne Birgitte Hansen.

Composition: fresh yet refined fabric, 92% New wool worsted, 8% Nylon. Weight: 400 g/lm. Flammability: AS/NZS 3837, BS 5852 Crib 5 with treatment, BS 5852 part 1, DIN 4102 B2, EN 1021-1/2, IMO FTP Code 2010 Part 8, NF D 60 013, NFPA 260, ÖNORM B1/ Q1, UNI 9175 Classe 1IM, US California Technical Bulletin 117-2013. Abrasion: EN ISO 12947: 80.000 Martindale cycles. Pilling: EN ISO 12945: 4. Colour fastness to light: ISO 105-B02: 6. Colour: slight difference may occur. Environment: complies with EU ecolabel "The Flower". 100% free of heavy metals.

Please refer to the Price list in force and to the General sale conditions for the colours and the combinations available for every single product.

Colours shown are used for reference only and may look different in reality. Please contact SitLand to receive more informations.



Materials and colours

Seat Upholstery

Back mesh upholstery

- FABRIC AB
- FABRIC AL | ALBA
- FABRIC BA | BASEL
- FABRIC BN
- FABRIC CL | CLARA 2
- FABRIC IP
- FABRIC ME
- FABRIC SY | SINERGY
- MESH RY | RHYTHM
- MESH RR

STRETCH fabric 100% Polyester FR Trevira CS Weight: 320 g/m² Abrasion Resistance: 50.000 cycles Martindale UNI EN ISO 12947 Flammability: 1 Class Italian norm - B1 DIN 4102, BS 5852 CRIB 5, EN 1021 -1&2 Color fastness to light: UNI EN ISO 105-B02:5 Color fastness to rubbing: EN ISO 105x12:4 (dry/wet). Vacuum clean regularly without brushing. Do not use cleaning agents that contain alcohol and / or ammonia or harsh detergents that can damage the appearance and the tightness of the fabric over time.

Please refer to the Price list in force and to the General sale conditions for the colours and the combinations available for every single product.

Colours shown are used for reference only and may look different in reality. Please contact SitLand to receive more informations.



Materials and colours

Seat Upholstery Back mesh upholstery

- FABRIC AB
- FABRIC AL | ALBA
- FABRIC BA | BASEL
- FABRIC BN
- FABRIC CL | CLARA 2
- FABRIC IP
- FABRIC ME
- FABRIC SY | SINERGY
- MESH RY | RHYTHM
- MESH RR

Manufacturer: Gabriel

Designer: Mette Krebs Petersen

Fabric 100% Polyester. Weight 510 gr/lm. Abrasion resistance: 75.000 Martindale EN ISO 12947-2. Flammability: EN 10211%2 Ð BS 5852 0&1 Ð California Tech. Bull. 117-E Ð UNI 9175 Class 1 IM. Pilling: EN ISO 12945-2:4. Colour fastness to light: EN ISO 105-B02:5/7. Colour fastness to rubbing: EN ISO 105x12:4/5 (wet/dry). Vacuum the surface of the fabric regularly, taking care do not rub the surface of the fabric. Small spots and / or stains can be cleaned with a damp cloth and a small amount of mild soap. Allow to dry naturally, do not rub.Do not use cleaning agents that contain alcohol and / or ammonia or harsh detergents that can damage the appearance and the tightness of the fabric over time.

Please refer to the Price list in force and to the General sale conditions for the colours and the combinations available for every single product.

Colours shown are used for reference only and may look different in reality. Please contact SitLand to receive more informations.



Materials and colours

Seat Upholstery Back mesh upholstery

- FABRIC AB
- FABRIC AL | ALBA
- FABRIC BA | BASEL
- FABRIC BN
- FABRIC CL | CLARA 2
- FABRIC IP
- FABRIC ME
- FABRIC SY | SINERGY
- MESH RY | RHYTHM
- MESH RR

SY - Sinergy by Camira
Composition: fine mixed fabric, 95% Virgin Wool, 5% Polyamide. Weight: 560 g/lm.
Flammability: EN 1021 - 1 (cigarette), EN 1021 - 2 (match), BS 7176 Low Hazard, UNI 9175 Classe 1 IM, NF D 60-013, ÖNORM B 3825 & A 3800-1, CAL TB 117 Section E, NFPA 260 + UFAC Class 1. Abrasion: BS EN ISO 12947-2: 100.000 Martindale cycles. Colour fastness to light: EN ISO 105-B02: 5. Colour fastness to rubbing (wet/dry) EN ISO 105x12:4. Environment: 100% free of heavy metals, complies with EU ecolabel “The Flower”.

Please refer to the Price list in force and to the General sale conditions for the colours and the combinations available for every single product.

Colours shown are used for reference only and may look different in reality. Please contact SitLand to receive more informations.



Materials and colours

Seat Upholstery Back mesh upholstery

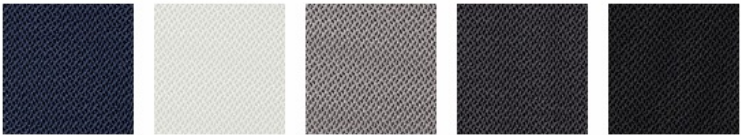
- FABRIC AB
- FABRIC AL | ALBA
- FABRIC BA | BASEL
- FABRIC BN
- FABRIC CL | CLARA 2
- FABRIC IP
- FABRIC ME
- FABRIC SY | SINERGY
- MESH RY | RHYTHM
- MESH RR

RY | Rhythm by Gabriel
Designer: Gabriel Design Team

Composition: 100% Polyester flame retardant. Weight: 525 g/lm. Flammability: BS EN 1021-1 cigarette, BS EN 1021-2 Match, BS 5852 Part 1 0, 1 Cigarette & match, BS 5852 Crib 5, BS 7176 Medium hazard, DIN 4102 B1, NF P 92-503 M3, UNI 9174 Classe Uno - UNI 8457, US California Technical Bulletin 117-2013. Abrasion: EN ISO 12947-2:70.000 Martindale cycles. Pilling: EN ISO 12945-2: 5. Colour fastness to light: EN ISO 105-B02: 5-7. Colour fastness to rubbing: EN ISO 105x12 (wet/dry): 4-5. Colour: slight difference may occur. Environment: Oeko Tex, 100% free of heavy metals. US Act: AATCC 16 Colour fastness to light; AATCC 8 or 116 Wet/dry crocking; AATCC 15 Perspiration; ASTM D3511 Pilling; ASTM D4034 Yarn slippage at a sewn seam; ASTM D5034 Breaking force; ASTM D4157-07 Wyz abrasion (heavy duty); CA TB 117-2013. Vacuum clean regularly; small spots and/or stains can be cleaned with a damp cloth and a very small amount of mild soap. Allow to dry naturally, do not rub. Do not use cleaning agents that contain alcohol and/or ammoniac or aggressive detergents that can damage the appearance and the tightness of the mesh fabric over time.

Please refer to the Price list in force and to the General sale conditions for the colours and the combinations available for every single product.

Colours shown are used for reference only and may look different in reality. Please contact SitLand to receive more informations.



Materials and colours

Seat Upholstery

Back mesh upholstery

FABRIC AB

FABRIC AL | ALBA

FABRIC BA | BASEL

FABRIC BN

FABRIC CL | CLARA 2

FABRIC IP

FABRIC ME

FABRIC SY | SINERGY

MESH RY | RHYTHM

MESH RR

Mesh fabric made of 100% Polyester, STRETCH. Eco-friendly Fabric Oeko-Tex 100 certified. The dyes are 100% free of heavy metals. Weight: 318 g/m² Abrasion Resistance: 70.000-80.000 Martindale cycles EN ISO 12947-2 Flammability: EN 1021- 1&2. UNI 9175 Class 1. California Bull. 117E. Color fastness to light: ISO 105-B02:5 Color fastness to rubbing: EN ISO 105x12:4/5 (dry/wet). Pilling EN ISO 12945-2:5.

Hoover with a vacuum cleaner at least once a month, taking care do not to rub on the surface of the fabric. Washable at 40°C by hand; max shrinkage of 5%. Small spots and/or stains can be cleaned with a damp cloth and a very small amount of mild soap. Allow to dry naturally, do not rub. Do not use cleaning agents that contain alcohol and/or ammonia or harsh detergents that can damage the appearance and the tightness of the fabric over time. The RR fabric has a ten-year guarantee against wear-through in normal office or home use.



Please refer to the Price list in force and to the General sale conditions for the colours and the combinations available for every single product.

Colours shown are used for reference only and may look different in reality. Please contact SitLand to receive more informations.

Materials and colours

Seat Upholstery

Back mesh upholstery

MESH RY | RHYTHM

MESH RR

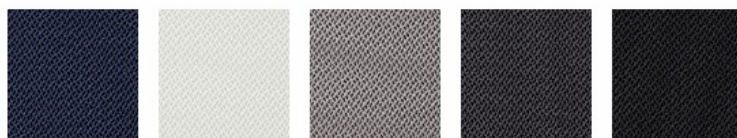
RY | Rhythm by Gabriel

Designer: Gabriel Design Team

Composition: 100% Polyester flame retardant. Weight: 525 g/lm. Flammability: BS EN 1021-1 cigarette, BS EN 1021-2 Match, BS 5852 Part 1 0, 1 Cigarette & match, BS 5852 Crib 5, BS 7176 Medium hazard, DIN 4102 B1, NF P 92-503 M3, UNI 9174 Classe Uno - UNI 8457, US California Technical Bulletin 117-2013. Abrasion: EN ISO 12947-2:70.000 Martindale cycles. Pilling: EN ISO 12945-2: 5. Colour fastness to light: EN ISO 105-B02: 5-7. Colour fastness to rubbing: EN ISO 105x12 (wet/dry): 4-5. Colour: slight difference may occur. Environment: Oeko Tex, 100% free of heavy metals. US Act: AATCC 16 Colour fastness to light; AATCC 8 or 116 Wet/dry crocking; AATCC 15 Perspiration; ASTM D3511 Pilling; ASTM D4034 Yarn slippage at a sewn seam; ASTM D5034 Breaking force; ASTM D4157-07 Wyz abrasion (heavy duty); CA TB 117-2013. Vacuum clean regularly; small spots and/or stains can be cleaned with a damp cloth and a very small amount of mild soap. Allow to dry naturally, do not rub. Do not use cleaning agents that contain alcohol and/or ammoniac or aggressive detergents that can damage the appearance and the tightness of the mesh fabric over time.

Please refer to the Price list in force and to the General sale conditions for the colours and the combinations available for every single product.

Colours shown are used for reference only and may look different in reality. Please contact SitLand to receive more informations.



Materials and colours

Seat Upholstery

Back mesh upholstery

MESH RY | RHYTHM

MESH RR

Mesh fabric made of 100% Polyester, STRETCH. Eco-friendly Fabric Oeko-Tex 100 certified. The dyes are 100% free of heavy metals. Weight: 318 g/m² Abrasion Resistance: 70.000-80.000 Martindale cycles EN ISO 12947-2 Flammability: EN 1021- 1&2. UNI 9175 Class 1. California Bull. 117E. Color fastness to light: ISO 105-B02:5 Color fastness to rubbing: EN ISO 105x12:4/5 (dry/wet). Pilling EN ISO 12945-2: 5.

Hoover with a vacuum cleaner at least once a month, taking care do not to rub on the surface of the fabric. Washable at 40°C by hand; max shrinkage of 5%. Small spots and/or stains can be cleaned with a damp cloth and a very small amount of mild soap. Allow to dry naturally, do not rub. Do not use cleaning agents that contain alcohol and/or ammonia or harsh detergents that can damage the appearance and the tightness of the fabric over time. The RR fabric has a ten-year guarantee against wear-through in normal office or home use.

Please refer to the Price list in force and to the General sale conditions for the colours and the combinations available for every single product.

Colours shown are used for reference only and may look different in reality. Please contact SitLand to receive more informations.

