

Materials and colours

Seat Upholstery      Technical Back

- FABRIC AB
- FABRIC AL | ALBA
- FABRIC BA | BASEL
- FABRIC BN
- FABRIC CL | CLARA 2
- FABRIC CN | CANVAS 2
- FABRIC IP
- FABRIC ME
- FABRIC ST | STEP
- FABRIC SY | SINERGY
- FAUX LEATHER CI

Crepe fabric made of 100% Xtreme FR® recycled polyester that is free of heavy metals. Weight: 310 g/m² Abrasion resistance: 100.000 cycles Martindale Flammability: EN 1021 1&2, BS 5852 CRIB 5, UNI 8456 & UNI 9174 CLASSE 1, NF-P-92-507 M1, NF D 60-013, DIN 4102 B1, Color fastness to light: UNI EN ISO 105-B02:6 Color fastness to rubbing: UNI EN ISO 105x12:4 (dry/wet). Vacuum the surface of the fabric regularly, taking care do not rub the surface of the fabric. Small spots and/or stains can be cleaned with a damp cloth and a small amount of mild soap. Allow to dry naturally, do not rub.Do not use cleaning agents that contain alcohol and / or ammonia or harsh detergents that can damage the appearance and the tightness of the fabric over time. The fabric Xtreme is guaranteed for 10 years in normal home or office use.

Please refer to the Price list in force and to the General sale conditions for the colours and the combinations available for every single product.

Colours shown are used for reference only and may look different in reality. Please contact SitLand to receive more informations.



## Materials and colours

Seat Upholstery

Technical Back

FABRIC AB

**FABRIC AL | ALBA**

FABRIC BA | BASEL

FABRIC BN

FABRIC CL | CLARA 2

FABRIC CN | CANVAS 2

FABRIC IP

FABRIC ME

FABRIC ST | STEP

FABRIC SY | SINERGY

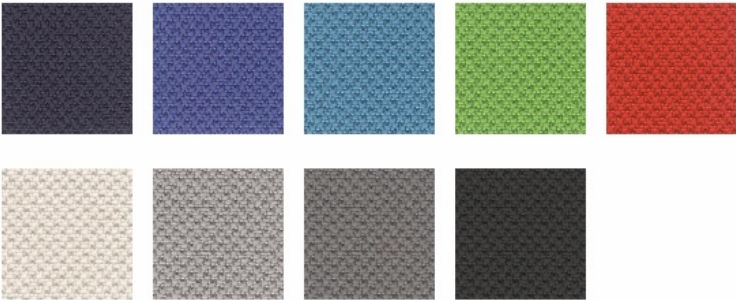
FAUX LEATHER CI

### AL - Alba by FIDIVI

Composition: 100% Polyester. Weight: 450 g/lm. Flammability: EN 1021-1 cigarette, EN 1021-2 match, Crib 5 (BS 5852 part II), BS 7176 Medium Hazard, UNI 9175 Class 1IM, US California Technical Bulletin 117-2013. Abrasion resistance: ISO 12947-2, 100.000 Martindale cycles. Pilling: EN ISO 12945-2:5. Colour fastness to light: ISO 105-B02, 6 (blue scale). Color fastness to rubbing: ISO 105-X12, 4/5 (grey scale).

Please refer to the Price list in force and to the General sale conditions for the colours and the combinations available for every single product.

Colours shown are used for reference only and may look different in reality. Please contact SitLand to receive more informations.



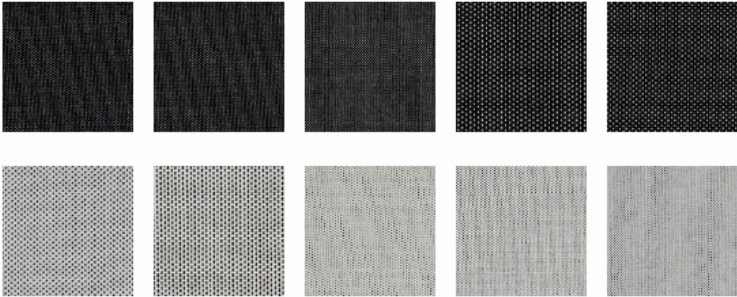
Materials and colours

Seat Upholstery      Technical Back

- FABRIC AB
- FABRIC AL | ALBA
- FABRIC BA | BASEL
- FABRIC BN
- FABRIC CL | CLARA 2
- FABRIC CN | CANVAS 2
- FABRIC IP
- FABRIC ME
- FABRIC ST | STEP
- FABRIC SY | SINERGY
- FAUX LEATHER CI

BA - Basel by Kvadrat  
Designer: Herzog & de Meuron

Composition: sophisticated fabric, 90% New wool worsted, 10% Nylon. Weight: 510 g/lm. Flammability AS/NZS 3837, class 2, BS 5852 Crib 5 with treatment, BS 5852 part 1, DIN 4102 B2, EN 1021-1/2, IMO FTP Code 2010 Part 8, NF D 60 013, NFPA 260, ÖNORM B1/ Q1, UNI 9175 Classe 1IM, US California Technical Bulletin 117-2013. Abrasion: EN ISO 12947 50.000 Martindale cycles. Pilling: EN ISO 12945:4. Colour fastness to light: ISO 105-B02:6-7. Colour: slight difference may occur. Environment: natural fibres / sustainable resource, 100% free of heavy metals, complies with ETAD norm.



Please refer to the Price list in force and to the General sale conditions for the colours and the combinations available for every single product.

Colours shown are used for reference only and may look different in reality. Please contact SitLand to receive more informations.

Materials and colours

Seat Upholstery

Technical Back

FABRIC AB

FABRIC AL | ALBA

FABRIC BA | BASEL

FABRIC BN

FABRIC CL | CLARA 2

FABRIC CN | CANVAS 2

FABRIC IP

FABRIC ME

FABRIC ST | STEP

FABRIC SY | SINERGY

FAUX LEATHER CI

Crepe fabric made of 100% polyester Oeko-Tex Standard 100 certified. Weight: 250 g/m² Abrasion resistance: 100.000 cycles Martindale EN ISO 12947-2 Flammability: EN 1021 1&2 - BS 5852 CRIB 5 - CLASS 1 IM, NF D 60013 Class AM 18. Color fastness to light: UNI EN ISO 105-B02:6 Color fastness to rubbing: UNI EN ISO 105x12:4/5.

Vacuum the surface of the fabric regularly, taking care do not rub the surface of the fabric. Small spots and/or stains can be cleaned with a damp cloth and a small amount of mild soap. Allow to dry naturally, do not rub.

Please refer to the Price list in force and to the General sale conditions for the colours and the combinations available for every single product.

Colours shown are used for reference only and may look different in reality. Please contact SitLand to receive more informations.



Materials and colours

Seat Upholstery      Technical Back

- FABRIC AB
- FABRIC AL | ALBA
- FABRIC BA | BASEL
- FABRIC BN
- FABRIC CL | CLARA 2
- FABRIC CN | CANVAS 2
- FABRIC IP
- FABRIC ME
- FABRIC ST | STEP
- FABRIC SY | SINERGY
- FAUX LEATHER CI

CL Clara 2 by Kvadrat  
Designer: Anne Birgitte Hansen.

Composition: fresh yet refined fabric, 92% New wool worsted, 8% Nylon. Weight: 400 g/lm. Flammability: AS/NZS 3837, BS 5852 Crib 5 with treatment, BS 5852 part 1, DIN 4102 B2, EN 1021-1/2, IMO FTP Code 2010 Part 8, NF D 60 013, NFPA 260, ÖNORM B1/ Q1, UNI 9175 Classe 1IM, US California Technical Bulletin 117-2013. Abrasion: EN ISO 12947: 80.000 Martindale cycles. Pilling: EN ISO 12945: 4. Colour fastness to light: ISO 105-B02: 6. Colour: slight difference may occur. Environment: complies with EU ecolabel "The Flower". 100% free of heavy metals.

Please refer to the Price list in force and to the General sale conditions for the colours and the combinations available for every single product.

Colours shown are used for reference only and may look different in reality. Please contact SitLand to receive more informations.





Materials and colours

Seat Upholstery      Technical Back

- FABRIC AB
- FABRIC AL | ALBA
- FABRIC BA | BASEL
- FABRIC BN
- FABRIC CL | CLARA 2
- FABRIC CN | CANVAS 2
- FABRIC IP
- FABRIC ME
- FABRIC ST | STEP
- FABRIC SY | SINERGY
- FAUX LEATHER CI

CN - Canvas 2 by Kvadrat  
Designer: Giulio Ridolfo.

Composition: 90% New wool worsted, 10% Nylon. Weight: 480 g/lm. Flammability: AS/NZS 1530.3, BS 5852 Crib 5 with treatment, BS 5852 part 1, DIN 4102 B2, EN 1021-1/2, IMO FTP Code 2010 Part 8, NF D 60 013, NFPA 260, ÖNORM B1/ Q1, SN 198 898 5.3 with treatment, UNI 9175 Classe 1IM, US California Technical Bulletin 117- 2013. Abrasion: EN ISO 12947: 100.000 Martindale cycles. Pilling: EN ISO 12945:4-5. Colour fastness to light: ISO 105-B02:6. Colour: slight difference may occur. Environment: complies with EU ecolabel “The Flower”, 100% free of heavy metals, complies with ETAD norm.



Please refer to the Price list in force and to the General sale conditions for the colours and the combinations available for every single product.

Colours shown are used for reference only and may look different in reality. Please contact SitLand to receive more informations.

Materials and colours

Seat Upholstery      Technical Back

- FABRIC AB
- FABRIC AL | ALBA
- FABRIC BA | BASEL
- FABRIC BN
- FABRIC CL | CLARA 2
- FABRIC CN | CANVAS 2
- FABRIC IP
- FABRIC ME
- FABRIC ST | STEP
- FABRIC SY | SINERGY
- FAUX LEATHER CI

STRETCH fabric 100% Polyester FR Trevira CS Weight: 320 g/m² Abrasion Resistance: 50.000 cycles Martindale UNI EN ISO 12947 Flammability: 1 Class Italian norm - B1 DIN 4102, BS 5852 CRIB 5, EN 1021 -1&2 Color fastness to light: UNI EN ISO 105-B02:5 Color fastness to rubbing: EN ISO 105x12:4 (dry/wet). Vacuum clean regularly without brushing. Do not use cleaning agents that contain alcohol and / or ammonia or harsh detergents that can damage the appearance and the tightness of the fabric over time.

Please refer to the Price list in force and to the General sale conditions for the colours and the combinations available for every single product.

Colours shown are used for reference only and may look different in reality. Please contact SitLand to receive more informations.



Materials and colours

Seat Upholstery      Technical Back

- FABRIC AB
- FABRIC AL | ALBA
- FABRIC BA | BASEL
- FABRIC BN
- FABRIC CL | CLARA 2
- FABRIC CN | CANVAS 2
- FABRIC IP
- FABRIC ME
- FABRIC ST | STEP
- FABRIC SY | SINERGY
- FAUX LEATHER CI

Manufacturer: Gabriel

Designer: Mette Krebs Petersen

Fabric 100% Polyester. Weight 510 gr/lm. Abrasion resistance: 75.000 Martindale EN ISO 12947-2. Flammability: EN 1021 1%2 Ø BS 5852 0&1 Ø California Tech. Bull. 117-E Ø UNI 9175 Class 1 IM. Pilling: EN ISO 12945-2:4. Colour fastness to light: EN ISO 105-B02:5/7. Colour fastness to rubbing: EN ISO 105x12:4/5 (wet/dry). Vacuum the surface of the fabric regularly, taking care do not rub the surface of the fabric. Small spots and / or stains can be cleaned with a damp cloth and a small amount of mild soap. Allow to dry naturally, do not rub.Do not use cleaning agents that contain alcohol and / or ammonia or harsh detergents that can damage the appearance and the tightness of the fabric over time.

Please refer to the Price list in force and to the General sale conditions for the colours and the combinations available for every single product.

Colours shown are used for reference only and may look different in reality. Please contact SitLand to receive more informations.





# Materials and colours

Seat Upholstery      Technical Back

- FABRIC AB
- FABRIC AL | ALBA
- FABRIC BA | BASEL
- FABRIC BN
- FABRIC CL | CLARA 2
- FABRIC CN | CANVAS 2
- FABRIC IP
- FABRIC ME
- FABRIC ST | STEP
- FABRIC SY | SINERGY
- FAUX LEATHER CI

ST - Step by Gabriel  
Designer: Inger Mosholt Nielsen.

Composition: fabric with delicate surface, 100% Trevira CS. Weight: 470 g/lm.  
Flammability: IMO MSC 307(88) Annex 1 part 8; MED Certificate IMO; DIN 4102 B1; NFP 92-503/504/505 M1; BS EN 1021 1&2 Cigarette and Match; BS 5852 Part 1 0, 1 Cigarette & Match; BS 5852 Crib 5; ÖNORM B 3825-B1-3800-Q1 UK; FAR/JAR 25.853 (a) (i) (ii); BS 7176 Medium hazard; AM 18-NF D60-013-(only for fabric); US California Technical Bulletin 117-2013; UNI 9175 Classe 1IM; DIN EN 13501-1 B-s1, d0. Abrasion: EN ISO 12947-2: 100.000 Martindale cycles. Pilling: EN ISO 12945-2: 4-5. Colour fastness to light: EN ISO 105-B02: 5-7. Colour fastness to rubbing: EN ISO 105x12(wet/dry):4-5. Acoustic test air flow resistance: EN 29053. Acoustic test sound absorption: ISO 354. Colour: slight difference may occur. Environment: Oeko Tex, complies with EU ecolabel "The Flower", 100% free of heavy metals. US Act: AATCC 16 Colour fastness to light; AATCC 8 or 116 Wet/dry crocking; ASTM D3511 Pilling; ASTM D4157-07 Wyz abrasion (heavy duty); CA TB 117-2013.

Please refer to the Price list in force and to the General sale conditions for the colours and the combinations available for every single product.

Colours shown are used for reference only and may look different in reality. Please contact SitLand to receive more informations.



Materials and colours

Seat Upholstery      Technical Back

- FABRIC AB
- FABRIC AL | ALBA
- FABRIC BA | BASEL
- FABRIC BN
- FABRIC CL | CLARA 2
- FABRIC CN | CANVAS 2
- FABRIC IP
- FABRIC ME
- FABRIC ST | STEP
- FABRIC SY | SINERGY
- FAUX LEATHER CI

SY - Sinergy by Camira  
Composition: fine mixed fabric, 95% Virgin Wool, 5% Polyamide. Weight: 560 g/lm.  
Flammability: EN 1021 - 1 (cigarette), EN 1021 - 2 (match), BS 7176 Low Hazard, UNI 9175 Classe 1 IM, NF D 60-013, ÖNORM B 3825 & A 3800-1. CAL TB 117 Section E, NFPA 260 + UFAC Class 1. Abrasion: BS EN ISO 12947-2: 100.000 Martindale cycles. Colour fastness to light: EN ISO 105-B02: 5. Colour fastness to rubbing (wet/dry) EN ISO 105x12:4. Environment: 100% free of heavy metals, complies with EU ecolabel "The Flower".

Please refer to the Price list in force and to the General sale conditions for the colours and the combinations available for every single product.

Colours shown are used for reference only and may look different in reality. Please contact SitLand to receive more informations.



## Materials and colours

Seat Upholstery

Technical Back

FABRIC AB

FABRIC AL | ALBA

FABRIC BA | BASEL

FABRIC BN

FABRIC CL | CLARA 2

FABRIC CN | CANVAS 2

FABRIC IP

FABRIC ME

FABRIC ST | STEP

FABRIC SY | SINERGY

**FAUX LEATHER CI**

Fine faux-leather fabric with a compact appearance, pleasant to the touch with a peach skin feel, bi-elastic, breathable. The CI faux leather is easy to clean, anti-bacterial and anti-mould; it allows you to avoid unpleasant odors and allergies. Composition: 79% PVC - 9% Polyurethane - 8% Polyester - 4%, Cotton - Weight: 630 g / sq m ( $\pm 10\%$ ) - Thickness: 1.1 mm - UV light resistance Xenotest Alpha:  $\geq 4$  grayscale - Abrasion method "Cesconi" UNI 4818 74-15° (Resistant) - flammability UNI 9175:2008 Class 1 IM. Faux leather that is completely free of phthalates. ECO material compliant with the REACH Regulation (Regulation EC 1907/2006).

### MAINTENANCE

Dust it gently; in case of minor stains wipe the surface with a damp cloth or with a solution of mild detergent, rinse with water, wring out, let it dry naturally. Do not use cleaning agents that contain alcohol and/or ammonia or harsh detergents that can damage the appearance and tightness of the eco-leather over time.

**Attention:** the fine ecological leather CI should not be brought into contact with textiles and/or clothing colored with unfixed dyes, or wetted or like jeans, to avoid permanent stains. We cannot guarantee the possibility to remove unknown dyes from light and medium colored product.

Please refer to the Price list in force and to the General sale conditions for the colours and the combinations available for every single product.

Colours shown are used for reference only and may look different in reality. Please contact SitLand to receive more informations.



## Materials and colours

Seat Upholstery

Technical Back

FABRIC AB

FABRIC BN

FABRIC IP

Crepe fabric made of 100% Xtreme FR® recycled polyester that is free of heavy metals. Weight: 310 g/m<sup>2</sup> Abrasion resistance: 100.000 cycles Martindale  
Flammability: EN 1021 1&2, BS 5852 CRIB 5, UNI 8456 & UNI 9174 CLASSE 1, NF-P-92-507 M1, NF D 60-013, DIN 4102 B1, Color fastness to light: UNI EN ISO 105-B02:6 Color fastness to rubbing: UNI EN ISO 105x12:4 (dry/wet).  
Vacuum the surface of the fabric regularly, taking care do not rub the surface of the fabric. Small spots and/or stains can be cleaned with a damp cloth and a small amount of mild soap. Allow to dry naturally, do not rub. Do not use cleaning agents that contain alcohol and / or ammonia or harsh detergents that can damage the appearance and the tightness of the fabric over time.  
The fabric Xtreme is guaranteed for 10 years in normal home or office use.



Please refer to the Price list in force and to the General sale conditions for the colours and the combinations available for every single product.

Colours shown are used for reference only and may look different in reality. Please contact SitLand to receive more informations.

## Materials and colours

Seat Upholstery

Technical Back

FABRIC AB

FABRIC BN

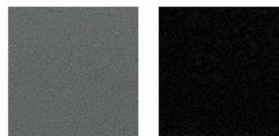
FABRIC IP

Crepe fabric made of 100% polyester Oeko-Tex Standard 100 certified. Weight: 250 g/m<sup>2</sup> Abrasion resistance: 100.000 cycles Martindale EN ISO 12947-2 Flammability: EN 1021 1&2 - BS 5852 CRIB 5 - CLASS 1 IM, NF D 60013 Class AM 18. Color fastness to light: UNI EN ISO 105-B02:6 Color fastness to rubbing: UNI EN ISO 105x12:4/5.

Vacuum the surface of the fabric regularly, taking care do not rub the surface of the fabric. Small spots and/or stains can be cleaned with a damp cloth and a small amount of mild soap. Allow to dry naturally, do not rub.

Please refer to the Price list in force and to the General sale conditions for the colours and the combinations available for every single product.

Colours shown are used for reference only and may look different in reality. Please contact SitLand to receive more informations.





## Materials and colours

Seat Upholstery

Technical Back

FABRIC AB

FABRIC BN

FABRIC IP

STRETCH fabric 100% Polyester FR Trevira CS Weight: 320 g/m<sup>2</sup> Abrasion Resistance: 50.000 cycles Martindale UNI EN ISO 12947 Flammability: 1 Class Italian norm - B1 DIN 4102, BS 5852 CRIB 5, EN 1021 -1&2 Color fastness to light: UNI EN ISO 105-B02:5 Color fastness to rubbing: EN ISO 105x12:4 (dry/wet). Vacuum clean regularly without brushing. Do not use cleaning agents that contain alcohol and / or ammonia or harsh detergents that can damage the appearance and the tightness of the fabric over time.



Please refer to the Price list in force and to the General sale conditions for the colours and the combinations available for every single product.

Colours shown are used for reference only and may look different in reality. Please contact SitLand to receive more informations.