

Materials and colours

Seat Upholstery

FABRIC AB

FABRIC AL | ALBA

FABRIC BA | BASEL

FABRIC CL | CLARA 2

FABRIC IP

FABRIC ME

FABRIC ST | STEP

FABRIC SY | SINERGY

FAUX LEATHER CI

FAUX LEATHER CX

FAUX LEATHER N

LEATHER TS

LEATHER S

Back Upholstery

Back mesh upholstery

Crepe fabric made of 100% Xtreme FR[®] recycled polyester that is free of heavy metals. Weight: 310 g/m² Abrasion resistance: 100.000 cycles Martindale Flammability: EN 1021 1&2, BS 5852 CRIB 5, UNI 8456 & UNI 9174 CLASSE 1, NF-P-92-507 M1, NF D 60-013, DIN 4102 B1, Color fastness to light: UNI EN ISO 105-B02:6 Color fastness to rubbing: UNI EN ISO 105x12:4 (dry/wet).

Vacuum the surface of the fabric regularly, taking care do not rub the surface of the fabric. Small spots and/or stains can be cleaned with a damp cloth and a small amount of mild soap. Allow to dry naturally, do not rub. Do not use cleaning agents that contain alcohol and / or ammonia or harsh detergents that can damage the appearance and the tightness of the fabric over time.

The fabric Xtreme is guaranteed for 10 years in normal home or office use.

Please refer to the Price list in force and to the General sale conditions for the colours and the combinations available for every single product.

Colours shown are used for reference only and may look different in reality. Please contact SitLand to receive more informations.



Materials and colours

Seat Upholstery

FABRIC AB

FABRIC AL | ALBA

FABRIC BA | BASEL

FABRIC CL | CLARA 2

FABRIC IP

FABRIC ME

FABRIC ST | STEP

FABRIC SY | SINERGY

FAUX LEATHER CI

FAUX LEATHER CX

FAUX LEATHER N

LEATHER TS

LEATHER S

Back Upholstery

Back mesh upholstery

AL - Alba by FiDiVi

Composition: 100% Polyester. Weight: 450 g/lm. Flammability: EN 1021-1 cigarette, EN 1021-2 match, Crib 5 (BS 5852 part II), BS 7176 Medium Hazard, UNI 9175 Class 1IM, US California Technical Bulletin 117-2013. Abrasion resistance: ISO 12947-2, 100.000 Martindale cycles. Pilling: EN ISO 12945-2:5. Colour fastness to light: ISO 105-B02, 6 (blue scale). Color fastness to rubbing: ISO 105-X12, 4/5 (grey scale).

Please refer to the Price list in force and to the General sale conditions for the colours and the combinations available for every single product.

Colours shown are used for reference only and may look different in reality. Please contact SitLand to receive more informations.



Materials and colours

Seat Upholstery

Back Upholstery

Back mesh upholstery

FABRIC AB

FABRIC AL | ALBA

FABRIC BA | BASEL

FABRIC CL | CLARA 2

FABRIC IP

FABRIC ME

FABRIC ST | STEP

FABRIC SY | SINERGY

FAUX LEATHER CI

FAUX LEATHER CX

FAUX LEATHER N

LEATHER TS

LEATHER S

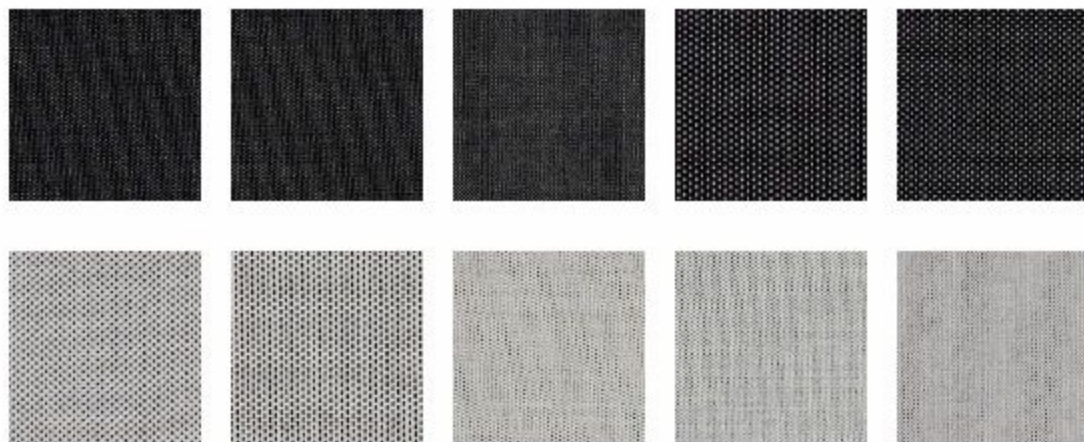
BA - Basel by Kvadrat

Designer: Herzog & de Meuron

Composition: sophisticated fabric, 90% New wool worsted, 10% Nylon. Weight: 510 g/lm. Flammability AS/NZS 3837, class 2, BS 5852 Crib 5 with treatment, BS 5852 part 1, DIN 4102 B2, EN 1021-1/2, IMO FTP Code 2010 Part 8, NF D 60 013, NFPA 260, ÖNORM B1/ Q1, UNI 9175 Classe 1IM, US California Technical Bulletin 117-2013. Abrasion: EN ISO 12947 50.000 Martindale cycles. Pilling: EN ISO 12945:4. Colour fastness to light: ISO 105-B02:6-7. Colour: slight difference may occur. Environment: natural fibres / sustainable resource, 100% free of heavy metals, complies with ETAD norm.

Please refer to the Price list in force and to the General sale conditions for the colours and the combinations available for every single product.

Colours shown are used for reference only and may look different in reality. Please contact SitLand to receive more informations.



Materials and colours

Seat Upholstery

FABRIC AB

FABRIC AL | ALBA

FABRIC BA | BASEL

FABRIC CL | CLARA 2

FABRIC IP

FABRIC ME

FABRIC ST | STEP

FABRIC SY | SINERGY

FAUX LEATHER CI

FAUX LEATHER CX

FAUX LEATHER N

LEATHER TS

LEATHER S

Back Upholstery

Back mesh upholstery

CL Clara 2 by Kvadrat

Designer: Anne Birgitte Hansen.

Composition: fresh yet refined fabric, 92% New wool worsted, 8% Nylon. Weight: 400 g/lm. Flammability: AS/NZS 3837, BS 5852 Crib 5 with treatment, BS 5852 part 1, DIN 4102 B2, EN 1021-1/2, IMO FTP Code 2010 Part 8, NF D 60 013, NFPA 260, ÖNORM B1/ Q1, UNI 9175 Classe 1IM, US California Technical Bulletin 117-2013. Abrasion: EN ISO 12947: 80.000 Martindale cycles. Pilling: EN ISO 12945: 4. Colour fastness to light: ISO 105-B02: 6. Colour: slight difference may occur. Environment: complies with EU ecolabel "The Flower". 100% free of heavy metals.

Please refer to the Price list in force and to the General sale conditions for the colours and the combinations available for every single product.

Colours shown are used for reference only and may look different in reality. Please contact SitLand to receive more informations.



Materials and colours

Seat Upholstery

FABRIC AB

FABRIC AL | ALBA

FABRIC BA | BASEL

FABRIC CL | CLARA 2

FABRIC IP

FABRIC ME

FABRIC ST | STEP

FABRIC SY | SINERGY

FAUX LEATHER CI

FAUX LEATHER CX

FAUX LEATHER N

LEATHER TS

LEATHER S

Back Upholstery

Back mesh upholstery

STRETCH fabric 100% Polyester FR Trevira CS Weight: 320 g/m² Abrasion Resistance: 50.000 cycles Martindale UNI EN ISO 12947 Flammability: 1 Class Italian norm - B1 DIN 4102, BS 5852 CRIB 5, EN 1021 -1&2 Color fastness to light: UNI EN ISO 105-B02:5 Color fastness to rubbing: EN ISO 105x12:4 (dry/wet). Vacuum clean regularly without brushing. Do not use cleaning agents that contain alcohol and / or ammonia or harsh detergents that can damage the appearance and the tightness of the fabric over time.

Please refer to the Price list in force and to the General sale conditions for the colours and the combinations available for every single product.

Colours shown are used for reference only and may look different in reality. Please contact SitLand to receive more informations.



Materials and colours

Seat Upholstery

FABRIC AB

FABRIC AL | ALBA

FABRIC BA | BASEL

FABRIC CL | CLARA 2

FABRIC IP

FABRIC ME

FABRIC ST | STEP

FABRIC SY | SINERGY

FAUX LEATHER CI

FAUX LEATHER CX

FAUX LEATHER N

LEATHER TS

LEATHER S

Back Upholstery

Back mesh upholstery

Manufacturer: Gabriel

Designer: Mette Krebs Petersen

Fabric 100% Polyester. Weight 510 gr/lm. Abrasion resistance: 75.000 Martindale EN ISO 12947-2. Flammability: EN 1021 1%2 D BS 5852 0&1 D California Tech. Bull. 117-E D UNI 9175 Class 1 IM. Pilling: EN ISO 12945-2:4. Colour fastness to light: EN ISO 105-B02:5/7. Colour fastness to rubbing: EN ISO 105x12:4/5 (wet/dry).

Vacuum the surface of the fabric regularly, taking care do not rub the surface of the fabric. Small spots and / or stains can be cleaned with a damp cloth and a small amount of mild soap. Allow to dry naturally, do not rub. Do not use cleaning agents that contain alcohol and / or ammonia or harsh detergents that can damage the appearance and the tightness of the fabric over time.

Please refer to the Price list in force and to the General sale conditions for the colours and the combinations available for every single product.

Colours shown are used for reference only and may look different in reality. Please contact SitLand to receive more informations.



Materials and colours

Seat Upholstery

Back Upholstery

Back mesh upholstery

FABRIC AB

FABRIC AL | ALBA

FABRIC BA | BASEL

FABRIC CL | CLARA 2

FABRIC IP

FABRIC ME

FABRIC ST | STEP

FABRIC SY | SINERGY

FAUX LEATHER CI

FAUX LEATHER CX

FAUX LEATHER N

LEATHER TS

LEATHER S

ST - Step by Gabriel

Designer: Inger Mosholt Nielsen.

Composition: fabric with delicate surface, 100% Trevira CS. Weight: 470 g/lm.

Flammability: IMO MSC 307(88) Annex 1 part 8; MED Certificate IMO; DIN 4102 B1; NFP 92-503/504/505 M1; BS EN 1021 1&2 Cigarette and Match; BS 5852 Part 1 0, 1 Cigarette & Match; BS 5852 Crib 5; ÖNORM B 3825-B1-3800-Q1 UK; FAR/JAR 25.853 (a) (i) (ii); BS 7176 Medium hazard; AM 18-NF D60-013-(only for fabric); US California Technical Bulletin 117-2013; UNI 9175 Classe 1IM; DIN EN 13501-1 B-s1, d0. Abrasion: EN ISO 12947-2: 100.000 Martindale cycles. Pilling: EN ISO 12945-2: 4-5. Colour fastness to light: EN ISO 105-B02: 5-7. Colour fastness to rubbing: EN ISO 105x12(wet/dry):4-5. Acoustic test air flow resistance: EN 29053. Acoustic test sound absorption: ISO 354. Colour: slight difference may occur. Environment: Oeko Tex, complies with EU ecolabel "The Flower", 100% free of heavy metals. US Act: AATCC 16 Colour fastness to light; AATCC 8 or 116 Wet/dry crocking; ASTM D3511 Pilling; ASTM D4157-07 Wyz abrasion (heavy duty); CA TB 117-2013.



Please refer to the Price list in force and to the General sale conditions for the colours and the combinations available for every single product.

Colours shown are used for reference only and may look different in reality. Please contact SitLand to receive more informations.

Materials and colours

Seat Upholstery

FABRIC AB

FABRIC AL | ALBA

FABRIC BA | BASEL

FABRIC CL | CLARA 2

FABRIC IP

FABRIC ME

FABRIC ST | STEP

FABRIC SY | SINERGY

FAUX LEATHER CI

FAUX LEATHER CX

FAUX LEATHER N

LEATHER TS

LEATHER S

Back Upholstery

Back mesh upholstery

SY - Sinergy by Camira

Composition: fine mixed fabric, 95% Virgin Wool, 5% Polyamide. Weight: 560 g/lm.
Flammability: EN 1021 - 1 (cigarette), EN 1021 - 2 (match), BS 7176 Low Hazard, UNI 9175 Classe 1 IM, NF D 60-013, ÖNORM B 3825 & A 3800-1. CAL TB 117 Section E, NFPA 260 + UFAC Class 1. Abrasion: BS EN ISO 12947-2: 100.000 Martindale cycles. Colour fastness to light: EN ISO 105-B02: 5. Colour fastness to rubbing (wet/dry) EN ISO 105x12:4. Environment: 100% free of heavy metals, complies with EU ecolabel "The Flower".

Please refer to the Price list in force and to the General sale conditions for the colours and the combinations available for every single product.

Colours shown are used for reference only and may look different in reality. Please contact SitLand to receive more informations.



Materials and colours

Seat Upholstery

Back Upholstery

Back mesh upholstery

FABRIC AB

FABRIC AL | ALBA

FABRIC BA | BASEL

FABRIC CL | CLARA 2

FABRIC IP

FABRIC ME

FABRIC ST | STEP

FABRIC SY | SINERGY

FAUX LEATHER CI

FAUX LEATHER CX

FAUX LEATHER N

LEATHER TS

LEATHER S

Fine faux-leather fabric with a compact appearance, pleasant to the touch with a peach skin feel, bi-elastic, breathable. The CI faux leather is easy to clean, anti-bacterial and anti-mould; it allows you to avoid unpleasant odors and allergies. Composition: 79% PVC - 9% Polyurethane - 8% Polyester - 4%, Cotton - Weight: 630 g / sq m ($\pm 10\%$) - Thickness: 1.1 mm - UV light resistance Xenotest Alpha: ≥ 4 grayscale - Abrasion method "Cesconi" UNI 4818 74-15° (Resistant) - flammability UNI 9175:2008 Class 1 IM. Faux leather that is completely free of phthalates. ECO material compliant with the REACH Regulation (Regulation EC 1907/2006).

MAINTENANCE

Dust it gently; in case of minor stains wipe the surface with a damp cloth or with a solution of mild detergent, rinse with water, wring out, let it dry naturally. Do not use cleaning agents that contain alcohol and/or ammonia or harsh detergents that can damage the appearance and tightness of the eco-leather over time.

Attention: the fine ecological leather CI should not be brought into contact with textiles and/or clothing colored with unfixed dyes, or wetted or like jeans, to avoid permanent stains. We cannot guarantee the possibility to remove unknown dyes from light and medium colored product.

Please refer to the Price list in force and to the General sale conditions for the colours and the combinations available for every single product.

Colours shown are used for reference only and may look different in reality. Please contact SitLand to receive more informations.



Materials and colours

Seat Upholstery

FABRIC AB

FABRIC AL | ALBA

FABRIC BA | BASEL

FABRIC CL | CLARA 2

FABRIC IP

FABRIC ME

FABRIC ST | STEP

FABRIC SY | SINERGY

FAUX LEATHER CI

FAUX LEATHER CX

FAUX LEATHER N

LEATHER TS

LEATHER S

Back Upholstery

Back mesh upholstery

Fine faux-leather fabric with a compact appearance, pleasant to the touch with a peach skin feel, bi-elastic, breathable. The CX faux leather is easy to clean, anti-bacterial and anti-mould; it allows you to avoid unpleasant odors and allergies. Composition: 79% PVC - 9% Polyurethane - 8% Polyester - 4% Cotton - Weight: 630 g / sq m ($\pm 10\%$) - Thickness: 1.1 mm - UV light resistance Xenotest Alpha: ≥ 4 gray scale - Abrasion method "Cesconi" UNI 4818 74-15° (Resistant). Faux leather that is completely free of phthalates. ECO material compliant with the REACH Regulation (Regulation EC 1907/2006).

MAINTENANCE

Dust it gently; in case of minor stains wipe the surface with a damp cloth or with a solution of mild detergent, rinse with water, wring out, let it dry naturally. Do not use cleaning agents that contain alcohol and/or ammonia or harsh detergents that can damage the appearance and tightness of the eco-leather over time.

Attention: the fine ecological leather CX should not be brought into contact with textiles and/or clothing colored with unfixed dyes, or wetted or like jeans, to avoid permanent stains. We cannot guarantee the possibility to remove unknown dyes from light and medium colored product.

Please refer to the Price list in force and to the General sale conditions for the colours and the combinations available for every single product.

Colours shown are used for reference only and may look different in reality. Please contact SitLand to receive more informations.



Materials and colours

Seat Upholstery

FABRIC AB

FABRIC AL | ALBA

FABRIC BA | BASEL

FABRIC CL | CLARA 2

FABRIC IP

FABRIC ME

FABRIC ST | STEP

FABRIC SY | SINERGY

FAUX LEATHER CI

FAUX LEATHER CX

FAUX LEATHER N

LEATHER TS

LEATHER S

Back Upholstery

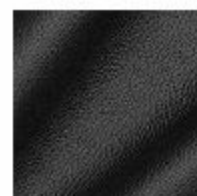
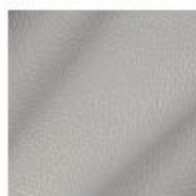
Back mesh upholstery

Ecological leather 80% PVC, 20% Polyester Weight: 550 g/m². The colours of the N faux-leather fabric match the corresponding colors of the genuine S leather. The fabric is wear-resistant and easy to clean with mild soap and water.

Do not use cleaning agents that contain alcohol and/or ammonia or harsh detergents that can damage the appearance and the tightness of the faux-leather over time.

Please refer to the Price list in force and to the General sale conditions for the colours and the combinations available for every single product.

Colours shown are used for reference only and may look different in reality. Please contact SitLand to receive more informations.



Materials and colours

Seat Upholstery

Back Upholstery

Back mesh upholstery

FABRIC AB

FABRIC AL | ALBA

FABRIC BA | BASEL

FABRIC CL | CLARA 2

FABRIC IP

FABRIC ME

FABRIC ST | STEP

FABRIC SY | SINERGY

FAUX LEATHER CI

FAUX LEATHER CX

FAUX LEATHER N

LEATHER TS

LEATHER S

Full grain real leather with a smooth and soft grain, natural, pigmented with aniline dye, carefully selected from top quality European bull hides that are exclusively of European origin. Solid and durable colors. Flammability: UNI EN ISO 1021 - 1&2 (no ignition). Conform to California TB 117 Section E.

Color fastness to light: UNI EN ISO 105-B02 ≥ 6 Color fastness to rubbing: UNI EN ISO 11640 ≥ 4 (dry/wet) Flex resistance: UNI EN ISO 5402 50.000 cycles no damage. To maintain the beauty of the leather; avoid placing leather near direct sun or any heat sources, dust regularly with a soft and dry cloth. Spots can be washed off using a lightly damp cloth with mild soap; dry after the treatment, do not rub. Never use strong detergents or sprays that can damage the appearance and tightness of the leather over time.

Please refer to the Price list in force and to the General sale conditions for the colours and the combinations available for every single product.

Colours shown are used for reference only and may look different in reality. Please contact SitLand to receive more informations.



Materials and colours

Seat Upholstery

Back Upholstery

Back mesh upholstery

FABRIC AB

FABRIC AL | ALBA

FABRIC BA | BASEL

FABRIC CL | CLARA 2

FABRIC IP

FABRIC ME

FABRIC ST | STEP

FABRIC SY | SINERGY

FAUX LEATHER CI

FAUX LEATHER CX

FAUX LEATHER N

LEATHER TS

LEATHER S

Buffed and pigmented real leather from European hides. Solid and durable colors. Flammability: UNI EN 1021 - 1&2 (no ignition) Color fastness to light: UNI EN ISO 105-B02 ≥ 6 Color fastness to rubbing: UNI EN ISO 11640 ≥ 4 (dry/wet).

To maintain the beauty of the leather; avoid placing leather near direct sun or any heat sources, dust regularly with a soft and dry cloth. Spots can be washed off using a lightly damp cloth with mild soap; dry after the treatment, do not rub. Never use strong detergents or sprays that can damage the appearance and tightness of the leather over time.

Please refer to the Price list in force and to the General sale conditions for the colours and the combinations available for every single product.

Colours shown are used for reference only and may look different in reality. Please contact SitLand to receive more informations.



Materials and colours

Seat Upholstery

Back Upholstery

Back mesh upholstery

MESH RP

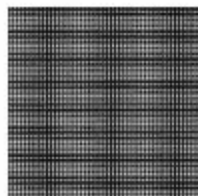
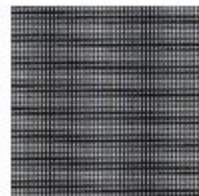
MESH RR

Breathable elastic mesh fabric. 70% PVC, 30% Polyester Weight: 565 g/m² Easily washable. Clean with a damp soapy cloth. Made without the use of heavy metals. Certificate OEKO-TEX Standard 100. Abrasion resistance > 100,000 Martindale cycles.

Do not use cleaning agents that contain alcohol and / or ammonia or harsh detergents that can damage the appearance and the tightness of the mesh fabric over time.

Please refer to the Price list in force and to the General sale conditions for the colours and the combinations available for every single product.

Colours shown are used for reference only and may look different in reality. Please contact SitLand to receive more informations.



Materials and colours

Seat Upholstery

Back Upholstery

Back mesh upholstery

MESH RP

MESH RR

Mesh fabric made of 100% Polyester, STRETCH. Eco-friendly Fabric Oeko-Tex 100 certified. The dyes are 100% free of heavy metals. Weight: 318 g/m² Abrasion Resistance: 70.000-80.000 Martindale cycles EN ISO 12947-2 Flammability: EN 1021- 1&2. UNI 9175 Class 1. California Bull. 117E. Color fastness to light: ISO 105-B02:5 Color fastness to rubbing: EN ISO 105x12:4/5 (dry/wet). Pilling EN ISO 12945-2: 5.

Hoover with a vacuum cleaner at least once a month, taking care do not to rub on the surface of the fabric. Washable at 40°C by hand; max shrinkage of 5%. Small spots and/or stains can be cleaned with a damp cloth and a very small amount of mild soap. Allow to dry naturally, do not rub. Do not use cleaning agents that contain alcohol and/or ammonia or harsh detergents that can damage the appearance and the tightness of the fabric over time. The RR fabric has a ten-year guarantee against wear-through in normal office or home use.

Please refer to the Price list in force and to the General sale conditions for the colours and the combinations available for every single product.

Colours shown are used for reference only and may look different in reality. Please contact SitLand to receive more informations.



Seat Upholstery

Back Upholstery

Back mesh upholstery

MESH RY | RHYTHM

RY | Rhythm by Gabriel

Designer: Gabriel Design Team

Composition: 100% Polyester flame retardant. Weight: 525 g/lm. Flammability: BS EN 1021-1 cigarette, BS EN 1021-2 Match, BS 5852 Part 1 0, 1 Cigarette & match, BS 5852 Crib 5, BS 7176 Medium hazard, DIN 4102 B1, NF P 92-503 M3, UNI 9174 Classe Uno - UNI 8457, US California Technical Bulletin 117-2013. Abrasion: EN ISO 12947-2:70.000 Martindale cycles. Pilling: EN ISO 12945-2: 5. Colour fastness to light: EN ISO 105-B02: 5-7. Colour fastness to rubbing: EN ISO 105x12 (wet/dry): 4-5. Colour: slight difference may occur. Environment: Oeko Tex, 100% free of heavy metals. US Act: AATCC 16 Colour fastness to light; AATCC 8 or 116 Wet/dry crocking; AATCC 15 Perspiration; ASTM D3511 Pilling; ASTM D4034 Yarn slippage at a sewn seam; ASTM D5034 Breaking force; ASTM D4157-07 Wyz abrasion (heavy duty); CA TB 117-2013. Vacuum clean regularly; small spots and/or stains can be cleaned with a damp cloth and a very small amount of mild soap. Allow to dry naturally, do not rub. Do not use cleaning agents that contain alcohol and/or ammoniac or aggressive detergents that can damage the appearance and the tightness of the mesh fabric over time.

Please refer to the Price list in force and to the General sale conditions for the colours and the combinations available for every single product.

Colours shown are used for reference only and may look different in reality. Please contact SitLand to receive more informations.

