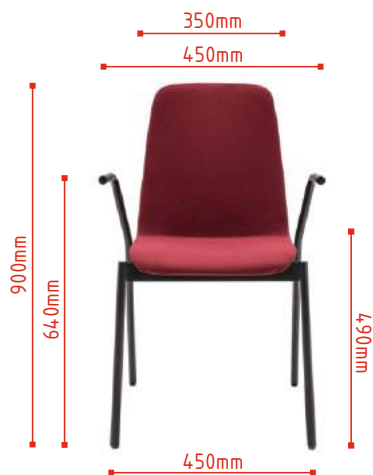


	Group	II	III
	Seat colours	MEDLEY ATLANTIC VITA	XTREME SYNERGY
Chair with P7KM base			

CONFIGURATION		<input type="radio"/> Standard <input checked="" type="radio"/> Option	PRICE
SEAT	Upholstered	<input type="radio"/>	
BASE P7KM	4-star metal base Colour black semi-gloss, burgundy semi-matt or white semi-gloss, powder coated. Castors for soft floors. Fixed seat.	<input type="radio"/>	
BASE P7KT	4-star metal base Colour black semi-gloss, burgundy semi-matt or white semi-gloss, powder coated. Castors for hard floors. Fixed seat.	<input checked="" type="radio"/>	
BASE P7	4-star metal base Colour black semi-gloss, burgundy semi-matt or white semi-gloss, powder coated. Swivel seat.	<input checked="" type="radio"/>	
BASE P1	4 legs, metal. Colour black semi-gloss, burgundy semi-matt or white semi-gloss, powder coated.	<input checked="" type="radio"/>	
BASE P2	4 legs, metal armrests. Colour black semi-gloss, burgundy semi-matt or white semi-gloss, powder coated.	<input checked="" type="radio"/>	
BASE P3KM	4 legs, metal armrests. Colour black semi-gloss, burgundy semi-matt or white semi-gloss, powder coated. Castors for soft floors.	<input checked="" type="radio"/>	
BASE P3KT	4 legs, metal armrests. Colour black semi-gloss, burgundy semi-matt or white semi-gloss, powder coated. Castors for hard floors.	<input checked="" type="radio"/>	

DIMENSIONS



12 kg
gross
D / W / H
470/590/920

SEAT



Metal frame filled with foam with a density of 55kg/m³, upholstered.

BASE P7KM, P7MT



4-star metal frame, M115 black semi-gloss, M013 burgundy semi-matt or M015 white semi-gloss, powder coated. Fixed seat. Legs made of a pipe with a diameter of 30x18mm, wall thickness 1,5mm. CNC-bent frame. Castors for soft (P7KM) or hard floors (P7KT).

BASE P7



4-star metal frame, M115 black semi-gloss, M013 burgundy semi-matt or M015 white semi-gloss, powder coated. 360 degree swivel seat mechanism. Legs made of an oval pipe 30x18mm, wall thickness 1,5mm. CNC-bent frame. Legs finished with polypropylene feet in frame colour.

BASE P1



4-legged metal frame, M115 black semi-gloss, M013 burgundy semi-matt or M015 white semi-gloss, powder coated. Legs made of a pipe with a diameter of Ø 22mm, wall thickness 2,5mm, finished with polypropylene feet in frame colour.

BASE P2



4-legged metal frame with armrests in M115 black semi-gloss, M013 burgundy semi-matt or M015 white semi-gloss, powder coated. Legs made of a pipe with a diameter of Ø 22mm, wall thickness 2,5mm. CNC-bent frame. Legs finished with polypropylene feet in frame colour.

BASE P3KM, P3MT



4-legged metal frame with armrests in M115 black semi-gloss, M013 burgundy semi-matt or M015 white semi-gloss, powder coated. Legs made of a pipe with a diameter of Ø 22mm, wall thickness 2,5mm. CNC-bent frame. Castors for soft (P3KM) or hard floors (P3KT).

	Group	II	III
	Seat colours	MEDLEY ATLANTIC VITA	XTREME SYNERGY
Chair with P8 base	Price		

CONFIGURATION		<input type="radio"/> Standard	PRICE
		<input checked="" type="radio"/> Option	
SEAT	Upholstered	<input type="radio"/>	
BASE P8	4 legs, wooden.	<input type="radio"/>	
BASE P9	4-star wooden base. Swivel seat.	<input checked="" type="radio"/>	

DIMENSIONS



10 kg
gross
D / W / H
470/590/920

BASE P8



4-legged wooden frame with a diameter of $\varnothing 35$ mm.
Beechwood coated with transparent varnish.
Metal legs-connecting elements in black semi-gloss.

BASE P9



4-star wooden frame with a diameter of $\varnothing 35$ mm.
Beechwood coated with transparent varnish.
360 degree swivel seat mechanism .
Metal legs-connecting elements in black semi-gloss.

	Group	II	III
	Seat colours	MEDLEY ATLANTIC VITA	XTREME SYNERGY
Chair with P7KM base			

CONFIGURATION		<input type="radio"/> Standard <input checked="" type="radio"/> Option	PRICE
SEAT	Upholstered	<input type="radio"/>	
BASE P7KM	4-star metal base Colour black semi-gloss, burgundy semi-matt or white semi-gloss, powder coated. Castors for soft floors. Fixed seat.	<input type="radio"/>	
BASE P7KT	4-star metal base Colour black semi-gloss, burgundy semi-matt or white semi-gloss, powder coated. Castors for hard floors. Fixed seat.	<input checked="" type="radio"/>	
BASE P7	4-star metal base Colour black semi-gloss, burgundy semi-matt or white semi-gloss, powder coated. Swivel seat.	<input checked="" type="radio"/>	
BASE P1	4 legs, metal. Colour black semi-gloss, burgundy semi-matt or white semi-gloss, powder coated.	<input checked="" type="radio"/>	
BASE P11	5 - star polypropylene base with feet. Base, feet in black.	<input checked="" type="radio"/>	
BASE P11KM	5 - star polypropylene base in black. Castors for soft floors.	<input checked="" type="radio"/>	
BASE P11KT	5 - star polypropylene base in black. Castors for hard floors.	<input checked="" type="radio"/>	
DIMENSIONS			



18 kg
gross
D / W / H
620/620/870

SEAT



Metal frame filled with foam with a density of 55kg/m³, upholstered.

BASE P7KM, P7KT



4-star metal frame, M115 black semi-gloss, M013 burgundy semi-matt or M015 white semi-gloss, powder coated. Fixed seat. Legs made of a pipe with a diameter of 30x18mm, wall thickness 1,5mm. CNC-bent frame. Castors for soft (P7KM) or hard floors (P7KT).

BASE P7



4-star metal frame, M115 black semi-gloss, M013 burgundy semi-matt or M015 white semi-gloss, powder coated. 360 degree swivel seat mechanism. Legs made of an oval pipe 30x18mm, wall thickness 1,5mm. CNC-bent frame. Legs finished with polypropylene feet in frame colour.

BASE P1



4-legged metal frame, M115 black semi-gloss, M013 burgundy semi-matt or M015 white semi-gloss, powder coated. Legs made of a pipe with a diameter of \varnothing 22mm, wall thickness 2,5mm, finished with polypropylene feet in frame colour.

BASE P11



5-star polypropylene base in black. 5-star base \varnothing = 680mm h = 124mm. Gas spring for chairs, steel in black. Adjustment range 130 mm. Base finished with polypropylene feet \varnothing = 50mm, h = 32mm in black.

BASE P11KM, P11KT



5-star polypropylene base in black. 5-star base \varnothing = 680mm h = 124mm. Gas spring for chairs, steel in black. Adjustment range 130mm. Base finished with castors \varnothing = 55mm for soft floors (P11KM) or for hard floors (P11KT).

	Group	II	III
	Seat colours	MEDLEY ATLANTIC VITA	XTREME SYNERGY
Chair with P8 base			

CONFIGURATION Standard Option

SEAT	Upholstered	<input type="radio"/>
BASE P8	4 legs, wooden.	<input type="radio"/>
BASE P9	4-star wooden base. Swivel seat.	<input checked="" type="radio"/>



16 kg
gross
D / W / H
620/620/870

BASE P8



4-legged wooden frame with a diameter of $\varnothing 35$ mm.
Beechwood coated with transparent varnish.
Metal legs-connecting elements in black semi-gloss.

BASE P9



4-star wooden frame with a diameter of $\varnothing 35$ mm.
Beechwood coated with transparent varnish.
360 degree swivel seat mechanism.
Metal legs-connecting elements in black semi-gloss.



MEDLEY

Group II

M-63064



M-68005



M-68002



M-68115



M-64019



M-67053



M-67006



M-60999



M-66008

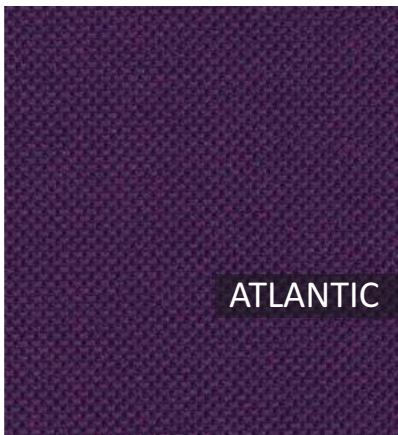


M-61002

Technical data

- Material**
- Fabric weight/lm**
- Abrasion resistance rubs**
- Pilling resistance**
- Colour fastness to light**
- Colour fastness to rubbing**
- Acoustic test sound absorption**
- Flammability**

polyester 100%
 364g/m2, 510g/lm
 75,000 Martindale cycles
 Scale 1-5, max. 5 - EN ISO 12945-2 4
 Scale 1-8, max. 8 - EN ISO 105-B02 5-7
 Scale 1-5, max. 5 - EN ISO 105x12 (wet/dry) 4-5/4-5
 ISO 354
 BS EN 1021 - 1:2006 (cigarette), BS EN 1021 - 2:2006, California Bulletin CAL 117-E-Class 1,
 Class Uno UNI 9175 Class 1 | EMME CA TB 117-2013



ATLANTIC

Group II

A-65037



A-64089



A-67043



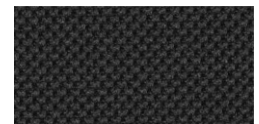
A-66064



A-62048



A-67030



A-60025



A-61078



A-60141



A-60011

Technical data

- Material**
- Fabric weight**
- Abrasion resistance rubs**
- Colour fastness to light**
- Colour fastness to rubbing**
- Flammability**

polyester 100%
 353g/m2, 530g/lm
 110,000 Rubs Martindale (EN ISO 12947-2)
 Scale 1-8, max. 8 - EN ISO 105-B02 5-7
 Scale 1-5, max. 5 - EN ISO 105x12 (wet/dry) 4-5/4-5
 ASTM E 84, BS 476 Part 7, class 1, BS EN 1021-1 cigarett, BS EN 1021-2 Match, CA TB 117-2013,
 Class Uno UNI 9175 Class 1 | EMME NF P 92-503 M3



Group II V-23



V-01



V-02



V-03



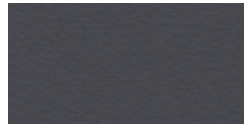
V-04



V-06



V-05



V-07



V-15



V-08



V-18



V-19



V-20

Technical data

- Material**
- Fabric weight**
- Abrasion resistance rubs**
- Flexes**
- Anti-microbial/ Anti-fungal**
- Flammability**

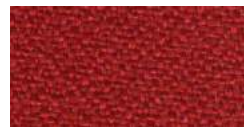
Surface: 98.5% PVC, 1.5% PU, Substrate: 50%, Polyester 50% Cotton
 850g/m2 ±10% (1190G/lin. m ±10%)
 100,000 Martindale cycles, BS EN ISO 5470-2:2003
 BS EN ISO 7854:1997 Method B, 400,000 Flexing cycles
 AATCC 147:2011
 BS EN 1021 - 1:2016 (cigarette), BS EN 1021 - 1:2016 (match),
 BS 5852:2006 Section 4 Ignition Source 5, BS 7176:2017 Medium Hazard,
 NF P 95 503 M2, FMVSS 302 (ISO 3795)



Group III XR420



Group III YS083



XR079



XR026



XR084



XR160



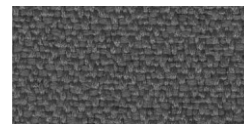
XR430



XR108



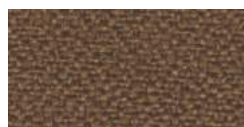
XR094



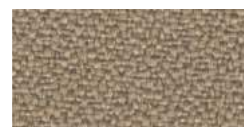
XR081



XR009



YS158



YS071



YS166

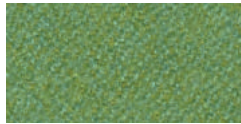
Technical data

- Material**
- Fabric weight**
- Abrasion resistance rubs**
- Colour fastness to light**
- Colour fastness to rubbing**
- Flammability**

100% Trevira Clame (CS), 100% Recycled (YS). Flame Retardant polyester, Non metallic dyestuffs.
 310g/m2 ±5% (435g/lin.m ±5%)
 60,000 Martindale cycles
 6 (ISO 105 - B02)
 Wet: 4, Dry: 4 (ISO 105 - X12)
 EN 1021 - 1 (cigarette), EN 1021 M - 2 (match), BS 7176 Low Hazard,
 NF P92-507 M1, DIN 4102 B1, UNI 9175 Classe 1 IM, UNI 8456,
 UNI 9174 & UNI 9177 Classe Uno, ÖNORM B 3825 & A 3800 -1, NF D 60-013



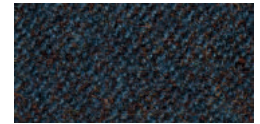
Group III LDS27



LDS53



LDS50



LDS60



LDS57



LDS61



LDS69



LDS84



LDS85



LDS86



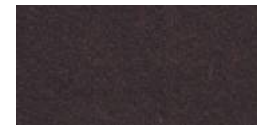
LDS20



LDS08



LDS29



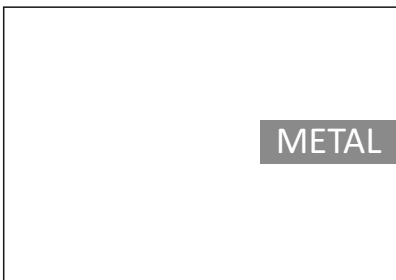
LDS88

Technical data

Material
Fabric weight
Abrasion resistance rubs
Light Fastness
Fastness to Rubbing
Flammability

95% Virgin Wool, 5% Polyamide
 400g/m2 ±5% (560g/lin.m ±5%)
 Independently certified to ≥100,000 Martindale cycles
 ISO 105 - B02 5
 ISO 105 - X12 - Wet: 4, Dry: 4
 EN 1021 - 1 (cigarette), EN 1021 - 2 (match), BS 7176 Low Hazard ,UNI 9175 Classe 1 IM,
 ÖNORM B 3825 & A 3800-1

Colours presented in the catalogue may vary from the original colours of furniture.



METAL



M013 - Burgundy semi-matt



M015 - White semi-matt



M115 - Black semi-matt