

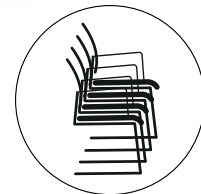
Group		I	II	III
Seat colours	BLACK POLYPROPYLENE	NEMO	RUNNER MEDLEY ATLANTIC VITA	XTREME SYNERGY
Price				

CONFIGURATION		<input type="radio"/> Standard <input checked="" type="radio"/> Option	PRICE
<b>BACKREST</b>	Mesh (9 colors Runner)	<input type="radio"/>	
<b>ARMREST</b>	No Polypropylene, black finish	<input type="radio"/> <input checked="" type="radio"/>	
<b>BASE</b>	4 metal legs. Colour: M115 black semi-matt, powder coated 4 metal legs. Chromed. Metal cantilever, chromed, with glides.	<input type="radio"/> <input checked="" type="radio"/> <input checked="" type="radio"/>	

**DIMENSIONS**



**10 kg**  
gross  
D / W / H  
590/870/650



Group		I	II	III
Seat colours	BLACK POLYPROPYLENE	NEMO	RUNNER MEDLEY ATLANTIC VITA	XTREME SYNERGY
Price				

**CONFIGURATION**  Standard  
 Option

<b>BACKREST</b>	Mesh (9 colors Runner)	<input type="radio"/>
<b>ARMREST</b>	No Polypropylene, black finish	<input type="radio"/> <input checked="" type="radio"/>
<b>BASE</b>	4 metal legs. Colour: M115 black semi-matt, powder coated. 4 metal legs. Chromed.	<input type="radio"/> <input checked="" type="radio"/>
<b>CASTORS</b>	Hard castors for soft floors Soft castors for hard floors	<input type="radio"/> <input checked="" type="radio"/>

**DIMENSIONS**



**10,5 kg**  
gross  
D / W / H  
590/870/650



Group I

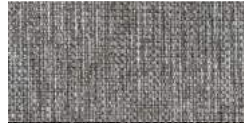
NE-9



NE-3



NE-2



NE-10



NE-5



NE-1



NE-14



NE-15



NE-17



NE-16

**Technical data**

**Material**  
**Fabric weight**  
**Abrasion resistance rubs**  
**Pilling resistance**  
**Colour fastness to light**  
**Colour fastness to rubbing**

polyester 100%  
 366g/m2  
 PN-EN ISO 12947 - 2:2 100,000  
 scale 1-8, max 8 · PN-EN ISO 105 - B02:2013 3-4  
 scale 1-5, max 5 · PN-EN 1021 - 2:2007, PN-EN 1021 - 1:2007  
 scale 1-5, max 5 · EN ISO 105x12 (wet/dry) 4-5



Group II

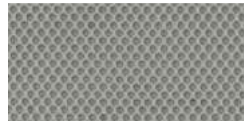
R-63034



R-64089



R-66063



R-60011



R-66064



R-68056



R-61128



R-60999



R-60025

**Technical data**

**Material**  
**Fabric weight/lm**  
**Abrasion resistance rubs**  
**Pilling resistance**  
**Colour fastness to light**  
**Colour fastness to rubbing**  
**Acoustic test sound absorption**  
**Flammability**

polyester 100%  
 320g/m2, 510g/lm (16.45 oz./lin.yd.)  
 70,000 Martindale cycles, BS EN 14465, EN ISO 12947-2  
 scale 1-5, max 5, EN ISO 12945-2 4-5  
 scale 1-8, max 8, EN ISO 105 - B02 5-7  
 scale 1-5, max 5, EN ISO 105x12 (wet/dry) 4-5  
 ISO 354  
 BS EN 1021-2 Match, California Bulletin CAL 117-E-Class 1 CA TB 117-2013,  
 BS EN 1021-1 cigarette, Class Uno UNI 9175 Class 1 | EMNE, BS EN 1021-1 cigarette



**MEDLEY**

Group II

M-63064



M-68005



M-68002



M-68115



M-64019



M-67053



M-67006



M-60999



M-66008

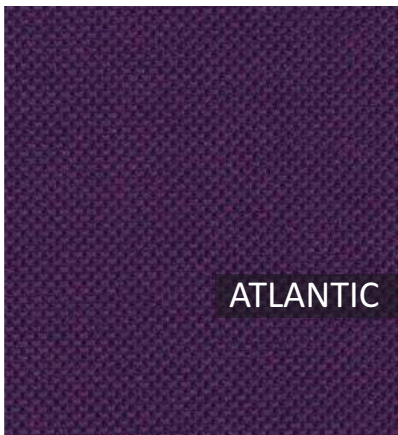


M-61002

**Technical data**

**Material**  
**Fabric weight/lm**  
**Abrasion resistance rubs**  
**Pilling resistance**  
**Colour fastness to light**  
**Colour fastness to rubbing**  
**Acoustic test sound absorption**  
**Flammability**

polyester 100%  
 364g/m2, 510g/lm  
 75,000 Martindale cycles  
 Scale 1-5, max. 5 - EN ISO 12945-2 4  
 Scale 1-8, max. 8 - EN ISO 105-B02 5-7  
 Scale 1-5, max. 5 - EN ISO 105x12 (wet/dry) 4-5/4-5  
 ISO 354  
 BS EN 1021 - 1:2006 (cigarette), BS EN 1021 - 2:2006, California Bulletin CAL 117-E-Class 1,  
 Class Uno UNI 9175 Class 1 | EMME CA TB 117-2013



**ATLANTIC**

Group II

A-65037



A-64089



A-67043



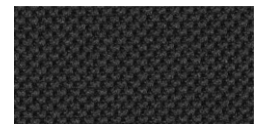
A-66064



A-62048



A-67030



A-60025



A-61078



A-60141



A-60011

**Technical data**

**Material**  
**Fabric weight**  
**Abrasion resistance rubs**  
**Colour fastness to light**  
**Colour fastness to rubbing**  
**Flammability**

polyester 100%  
 353g/m2, 530g/lm  
 110,000 Rubs Martindale (EN ISO 12947-2)  
 Scale 1-8, max. 8 - EN ISO 105-B02 5-7  
 Scale 1-5, max. 5 - EN ISO 105x12 (wet/dry) 4-5/4-5  
 ASTM E 84, BS 476 Part 7, class 1, BS EN 1021-1 cigarett, BS EN 1021-2 Match, CA TB 117-2013,  
 Class Uno UNI 9175 Class 1 | EMME NF P 92-503 M3





Group II V-23



V-01



V-02



V-03



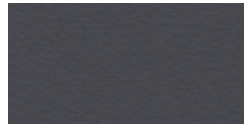
V-04



V-06



V-05



V-07



V-15



V-08



V-18



V-19



V-20

**Technical data**

- Material**
- Fabric weight**
- Abrasion resistance rubs**
- Flexes**
- Anti-microbial/ Anti-fungal**
- Flammability**

Surface: 98.5% PVC, 1.5% PU, Substrate: 50%, Polyester 50% Cotton  
 850g/m2 ±10% (1190G/lin. m ±10%)  
 100,000 Martindale cycles, BS EN ISO 5470-2:2003  
 BS EN ISO 7854:1997 Method B, 400,000 Flexing cycles  
 AATCC 147:2011  
 BS EN 1021 - 1:2016 (cigarette), BS EN 1021 - 1:2016 (match),  
 BS 5852:2006 Section 4 Ignition Source 5, BS 7176:2017 Medium Hazard,  
 NF P 95 503 M2, FMVSS 302 (ISO 3795)



Group III XR420



XR079



XR026



XR084



XR160



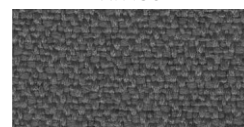
XR430



XR108



XR094



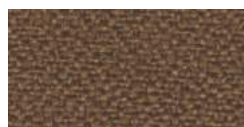
XR081



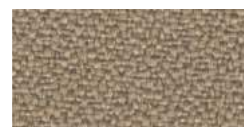
XR009



Group III YS083



YS158



YS071



YS166

**Technical data**

- Material**
- Fabric weight**
- Abrasion resistance rubs**
- Colour fastness to light**
- Colour fastness to rubbing**
- Flammability**

100% Trevira Clame (CS), 100% Recycled (YS). Flame Retardant polyester, Non metallic dyestuffs.  
 310g/m2 ±5% (435g/lin.m ±5%)  
 60,000 Martindale cycles  
 6 (ISO 105 - B02)  
 Wet: 4, Dry: 4 (ISO 105 - X12)  
 EN 1021 - 1 (cigarette), EN 1021 M - 2 (match), BS 7176 Low Hazard,  
 NF P92-507 M1, DIN 4102 B1, UNI 9175 Classe 1 IM, UNI 8456,  
 UNI 9174 & UNI 9177 Classe Uno, ÖNORM B 3825 & A 3800 -1, NF D 60-013

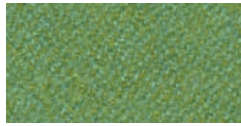


Group III

LDS27



LDS20



LDS53



LDS57



LDS84



LDS08



LDS50



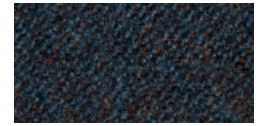
LDS61



LDS85



LDS29



LDS60



LDS69



LDS86



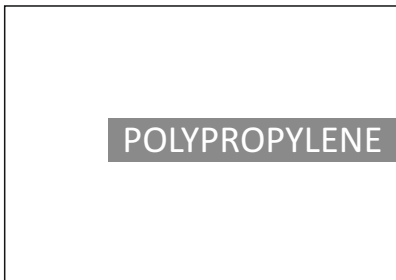
LDS88

**Technical data**

- Material**
- Fabric weight**
- Abrasion resistance rubs**
- Light Fastness**
- Fastness to Rubbing**
- Flammability**

95% Virgin Wool, 5% Polyamide  
 400g/m2 ±5% (560g/lin.m ±5%)  
 Independently certified to ≥100,000 Martindale cycles  
 ISO 105 - B02 5  
 ISO 105 - X12 - Wet: 4, Dry: 4  
 EN 1021 - 1 (cigarette), EN 1021 - 2 (match), BS 7176 Low Hazard ,UNI 9175 Classe 1 IM,  
 ÖNORM B 3825 & A 3800-1

Colours presented in the catalogue may vary from the original colours of furniture.



Black